

POS SYSTEM



CHDPOS w/ NF525 SUPPORT



Technical Manual



Computer Hardware Design SIA

Version: 1.0

Date: 05/2018

Revision History

| Version | Date | Changes | Notes |
|---------|------------|---------|-------|
| 1.0 | 14.05.2018 | | CHD |

Notice

Computer Hardware Design reserves all rights to make changes to specifications without notification.

This publication, or parts thereof, may not be reproduced in any form without prior written permission of Computer Hardware Design. Unauthorized use or distribution of this publication is prohibited.

Computer Hardware Design Ltd.

15 Ulbrokas street

Riga, LV1021

Phone: +371 67802812

Fax: +371 67802822

chd@chd.lv

www.chd.lv

CONTENT

| | | |
|------|--|----|
| 1. | CHDPOS ARCHITECTURE..... | 4 |
| 1.1. | Architecture..... | 4 |
| 1.2. | NF525 Data Base ER Diagram..... | 4 |
| 1.3. | Keys | 5 |
| 2. | SALES DATA (TICKET) AGGREGATION AND STORING..... | 6 |
| 2.1. | Architecture..... | 6 |
| 2.2. | Hash and Signature for Chains | 6 |
| 2.3. | Code..... | 7 |
| 2.4. | Required Space on Hard Drive for NF525 data base | 7 |
| 3. | GRAND-TOTALS, DUPLICATES, TECHNICAL EVENT LOG | 9 |
| 4. | ARCHIVE FILE CREATION AND DESCRIPTION | 10 |
| 4.1. | Architecture..... | 10 |
| 4.2. | Hash and Signature | 10 |
| 4.3. | Code..... | 10 |
| 4.4. | Required Space on Hard Drive for Archives | 11 |
| 5. | ARCHIVE FILE (XML) SAMPLE..... | 12 |

1. CHDPOS Architecture

CHDPOS is MS Windows based application running on WinXP / Win7 / Win8 / Win10 environments. MS SQL Server 2008 R2 serves as a database engine.

1.1. Architecture

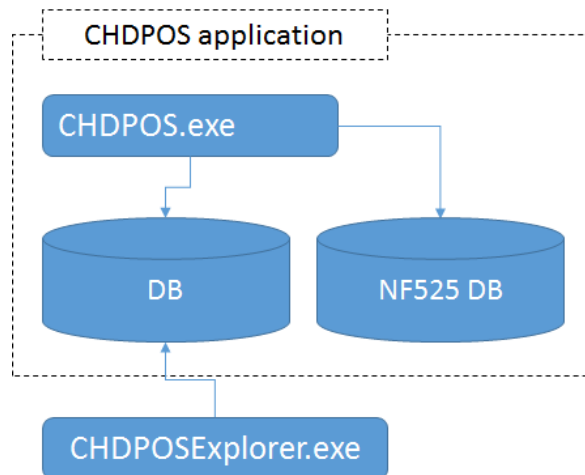


Figure 1 CHDPOS Architecture

CHDPOS application has a driver oriented architecture. There are two new drivers added to support NF525 requirements implantation:

- 1) NF525 driver – aggregates sales data, creates hash, signature, provides export etc.
- 2) Storage driver – communication layer with NF525 SQL database.

Current NF525 implementation supports the following chains:

- Ticket
- Duplicates
- Grand-Totals
- Technical Event Log (JET)

There are two databases required to run CHDPOS application in FR environment:

- 1) Default database where configuration and various data (e.g. promotions, items, prices, customers etc.) are stored.
- 2) NF525 database where only NF525 required sales data are stored.

1.2. NF525 Data Base ER Diagram

Table structure including all required fields is available in the next figure.

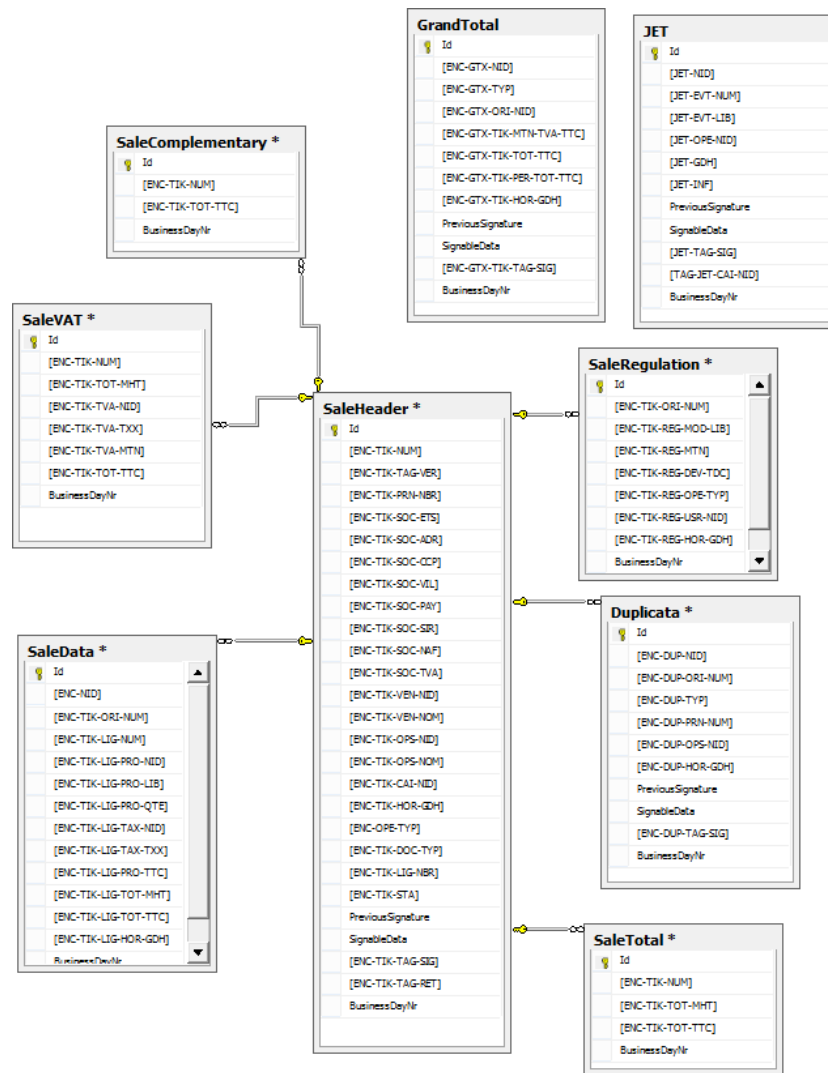


Figure 2 NF525 ER diagram

1.3. Keys

A new pair of keys¹ is generate on each POS by administrator during configuration phase. Both private and public key are stored in the MS Windows Key Store (Local Machine).

Public key can be exported to external device by administrator upon request.

Current solution is using RSA 2048 bits keys.

This pair of key is used for all signing options in the NF525 solution.

¹ Can be generate only when period is closed.

2. Sales Data (Ticket) Aggregation and Storing

2.1. Architecture

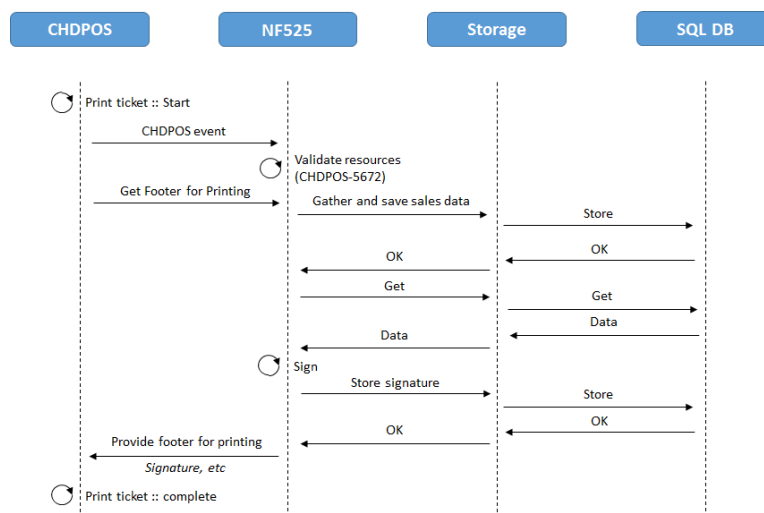


Figure 3 Sales Data Aggregation

CHDPOS before printing validates available resources. This event is captured by NF525 driver which also validates required tools (key, storage) to complete sales data storage.

During printing the footer information is requested. At this event NF525 gathers all required sales data and passes this information to the Storage driver so the data is stored.

Saved data is received from the database and signed. Signature is stored in the database. At the end NF525 returns ticket footer information to the CHDPOS with all required fields (unique identifier, product category, certificate number and 4 (four) chars from signature (position 3, 7, 13, 19)).

CHDPOS completes the ticket printing.

2.2. Hash and Signature for Chains

The same approach is used for all chains:

- 1) Create string with data²
- 2) Create hash by using SHA256 algorithm
- 3) Sign hash using private key
- 4) Encode signature using base64url

The following fields are used to create an initial data string for Ticket:

| Field | Label |
|--|---------------------|
| Tax. Incl. amounts brake down per VAT rate | TAG-TIK-TOT-TTC-TVA |
| Total Tax. Incl. amount of the ticket | TAG-TIK-TOT-TTC |
| Operation Timestamp | TAG-TIK-HOR-GDH |
| Document number (unique) | TAG-TIK-NUM |
| Operation type | TAG-TIK-OPE-TYP |
| Is there a previous signature? | TAG-TIK-OEN |

² According section 5.1 in 'Financial Data Dictionary' (R13)

| | |
|----------------------|-------------|
| Electronic signature | TAG-TIK-SIG |
|----------------------|-------------|

The following fields are used to create an initial data string for Duplicates:

| Field | Label |
|--------------------------------|-----------------|
| Duplicate number | TAG-DUP-NID |
| Original document type | TAG-DUP-TYP |
| Reprint number | TAG-DUP-PRN-NUM |
| Operator code | TAG-DUP-OPS-NID |
| Operation Timestamp | TAG-DUP-HOR-GDH |
| Original document number | TAG-DUP-ORI-NUM |
| Is there a previous signature? | TAG-DUP-OEN |
| Electronic signature | TAG-DUP-SIG |

The following fields are used to create an initial data string for Grand-Totals:

| Field | Label |
|--|---------------------|
| Tax. Incl. amounts brake down per VAT rate | TAG-GTT-TOT-TVA-TTC |
| Total Tax. Incl. amount | TAG-GTT-TOT-TTC |
| Operation Timestamp | TAG-GTT-HOR-GDH |
| Period or Ticket identification number | TAG-GTT-NID |
| Is there a previous signature? | TAG-GTT-OEN |
| Electronic signature | TAG-GTT-SIG |

The following fields are used to create an initial data string for Technical Event Log:

| Field | Label |
|--------------------------------|-----------------|
| JET ID | TAG-JET-NID |
| Event Code | TAG-JET-COD |
| Event label / description | TAG-JET-LIB |
| Operator code | TAG-JET-HOR-GDH |
| Terminal / POS code | TAG-JET-CAI-NID |
| Is there a previous signature? | TAG-JET-OEN |
| Electronic signature | TAG-JET-SIG |

2.3. Code

```
internal static string calculateBase64UrlSignature (string certificateThumbprint, string message)
{
    HashAlgorithm hashAlgorithm = SHA256.Create ();
    var data = Encoding.UTF8.GetBytes (message);
    var hash = hashAlgorithm.ComputeHash (data);
    var cert = GetCertificate (certificateThumbprint);
    var csp = (RSACryptoServiceProvider) cert.PrivateKey;
    var shaOid = CryptoConfig.MapNameToOID ("SHA256");
    var signature = csp.SignHash (hash, shaOid);
    var base64UrlSignature = Convert.ToBase64String (signature).TrimEnd (padding).Replace ('+', '-')
).Replace ('/', '_');
    return base64UrlSignature;
}
```

2.4. Required Space on Hard Drive for NF525 data base

Assumptions:

- 1) 300 tickets per day
- 2) 10 items in ticket

Facts:

- 1) 5 tickets w/ 10 items per ticket takes around 100kb (data + indexes)

Math: $100\text{kb} * 60 * 365 \text{ days} * 7 \text{ years} = \sim 15\text{Gb}$

3. Grand-Totals, Duplicates, Technical Event Log

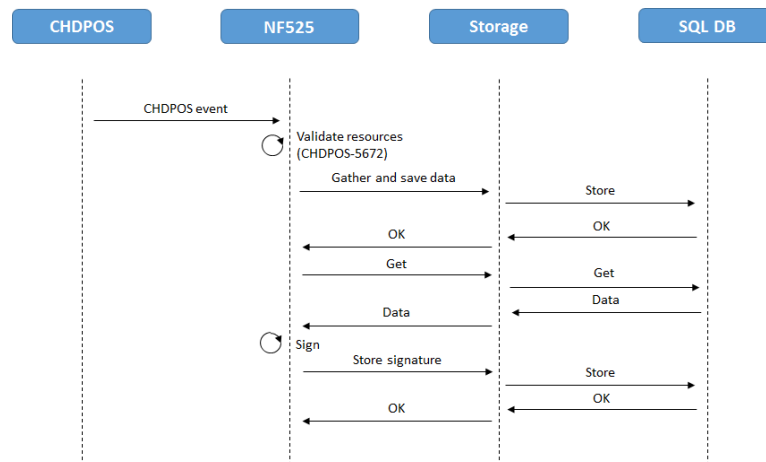


Figure 4 Data Aggregation for Other Chains

The process is very similar to the Sales data aggregation. CHDPOS generates event that is monitored by NF525 driver. At first NF525 validates available resources, than stores data in the database by passing those to the Storage driver. Upon completion NF525 reads data once more from the database and creates signature that is stored in the database.

Hash and signature generation is the same as described in sections 2.2 and 2.3.

4. Archive File Creation and Description

4.1. Architecture

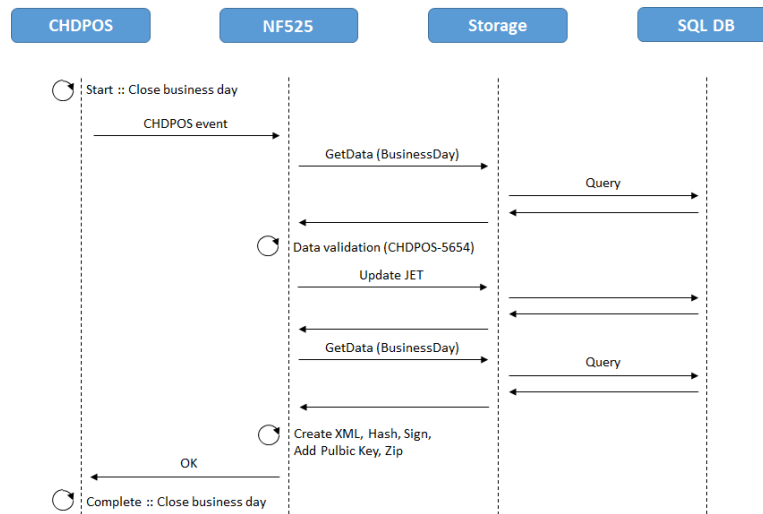


Figure 5 Archive File Creation

CHDPOS initializes period closure. During this process NF525 is invoked and aggregates data for the current business period (business day) by requesting this information from the database through Storage driver.

Data validation is performed as a next step and any inconsistencies are reported in the Technical Event Log:

- 1) All records in every chain are validated
- 2) Gaps in sequence IDs are checked

Technical Event Log is updated to store validation results. Data is pulled once more from the data base, XML file generated, hashed and signed. As a last step public key added is added to the XML file and archive (zip) file created.

XML file sample is provided in the section “5 Archive File (XML) Sample”.

4.2. Hash and Signature

The following approach is used:

- 1) Create hash using SHA1 algorithm
- 2) Sign hash using private key
- 3) Add public key to the XML file

4.3. Code

```

public static void SignXml (XmlDocument xmlDoc, RSA key)
{
    // Check arguments.
    if (xmlDoc == null)
        throw new ArgumentException ("xmlDoc");
    if (key == null)
        throw new ArgumentException ("key");

    // Create a SignedXml object.
  
```

```
var signedXml = new SignedXml (xmlDoc) {SigningKey = key};

// Add the key to the SignedXml document.

// Create a reference to be signed.
var reference = new Reference {Uri = ""};

// Add an enveloped transformation to the reference.
var env = new XmlDsigEnvelopedSignatureTransform ();
reference.AddTransform (env);

// Add the reference to the SignedXml object.
signedXml.AddReference (reference);

// Compute the signature.
signedXml.ComputeSignature();

// Get the XML representation of the signature and save
// it to an XmlElement object.
var xmlDigitalSignature = signedXml.GetXml ();

// Append the element to the XML document.
xmlDoc.DocumentElement.AppendChild (xmlDoc.ImportNode (xmlDigitalSignature, true));
}
```

4.4. Required Space on Hard Drive for Archives

Assumptions:

- 1) 300 tickets per day
- 2) 10 items in ticket

Facts:

- 1) 5 tickets w/ 10 items per ticket takes around 20kb (in zip format)

Math: 20kb * 60 * 365 days * 7 years = ~3Gb

5. Archive File (XML) Sample

XML file sample from a simple sale is available below.

```
<Archive Date="20180515161027">
  <SaleHeaderTable>
    <SaleHeader>
      <ENC-TIK-NUM>33</ENC-TIK-NUM>
      <ENC-TIK-TAG-VER>8.1.12 alpha</ENC-TIK-TAG-VER>
      <ENC-TIK-PRN-NBR>1</ENC-TIK-PRN-NBR>
      <ENC-TIK-SOC-ETS>Pieuvre</ENC-TIK-SOC-ETS>
      <ENC-TIK-SOC-ADR>21 Av. des Champs-Élysées</ENC-TIK-SOC-ADR>
      <ENC-TIK-SOC-CCP>75008</ENC-TIK-SOC-CCP>
      <ENC-TIK-SOC-VIL>Paris</ENC-TIK-SOC-VIL>
      <ENC-TIK-SOC-PAY>France</ENC-TIK-SOC-PAY>
      <ENC-TIK-SOC-SIR>12345</ENC-TIK-SOC-SIR>
      <ENC-TIK-SOC-NAF>1323C</ENC-TIK-SOC-NAF>
      <ENC-TIK-SOC-TVA>1232332</ENC-TIK-SOC-TVA>
      <ENC-TIK-VEN-NID>7766</ENC-TIK-VEN-NID>
      <ENC-TIK-VEN-NOM>Panthère</ENC-TIK-VEN-NOM>
      <ENC-TIK-OPS-NID>99</ENC-TIK-OPS-NID>
      <ENC-TIK-OPS-NOM>CHD Supervisor</ENC-TIK-OPS-NOM>
      <ENC-TIK-CAI-NID>POS#2534</ENC-TIK-CAI-NID>
      <ENC-TIK-HOR-GDH>20180515160907</ENC-TIK-HOR-GDH>
      <ENC-OPE-TYP>Sale</ENC-OPE-TYP>
      <ENC-TIK-DOC-TYP>Receipt</ENC-TIK-DOC-TYP>
      <ENC-TIK-LIG-NBR>2</ENC-TIK-LIG-NBR>
      <ENC-TIK-STA>Production</ENC-TIK-STA>
      <ENC-TIK-TAG-
        SIG>jgeKS8AXiHCuDX7dbr2qeSWZ3JivpT2y8k2YqevKPiL0by8XmD0VrkeOteEa1WbcYGiBFSvVc2s45AT0VFz6
        fre-Pg6QSf0CxvF4bSKISdxx4DcD0mthTIT5-oe9MUU5FuuY64fUgjqloNDZxDzOtZrx-qF3HxmBKa-
        lWpjElpMUwLpwKw3c5o1KP1i0lkWiuJBBmMcyYfjdv2DmufjO2eUawlwzD9l0L4U_dNEGkQj0J4P8G8G0kq2yTv
        N-
        p6IMYAGjgmJjxzevuXKV4sejxvHsu5TgELILHiE_yKEKkx3vXTjMB4wUrKe2YzeTxm9nKLExnZjiU15MIQiU3aTw
        Og</ENC-TIK-TAG-SIG>
      <ENC-TIK-TAG-RET>B0123 (eAD2)</ENC-TIK-TAG-RET>

    <PreviousSignature>S39prKiCBmt5lrK39P12kumhTwBazthH6HQuqeK500J4PuzH0H9GBIZDdmrJqHHWs86A
      NY54Jqyhd65ybqIGeoN4n86Ljrk-rjWaEJoAfFnniO8qK6rHKb-JziFe0eucfpdQf29YUqAm0dr6N2jinWZ7ih-
      DsWJVkWDZf224V3MwnYRIq5xbN-
      ldw3SjnD2Ka12TOXWHwmOs_HSs7df_a3qZajtwuXWbSvfC8cea6W3eysNk2mLLa7v6mVQWci6ySNgFq6P-
      m_kK1LMWCjJ1rnAaso1uBNSZMYImBK_dE6Rq-ym0oKgRkyY5_OtLyg2-
      n0usMRTog2VPmCwIZQDg</PreviousSignature>

    <SignableData>0500:725|1800:615,1340,20180515160907,33,Sale,O,S39prKiCBmt5lrK39P12kumhTwBa
      zthH6HQuqeK500J4PuzH0H9GBIZDdmrJqHHWs86ANY54Jqyhd65ybqIGeoN4n86Ljrk-
      rjWaEJoAfFnniO8qK6rHKb-JziFe0eucfpdQf29YUqAm0dr6N2jinWZ7ih-DsWJVkWDZf224V3MwnYRIq5xbN-
      ldw3SjnD2Ka12TOXWHwmOs_HSs7df_a3qZajtwuXWbSvfC8cea6W3eysNk2mLLa7v6mVQWci6ySNgFq6P-
      m_kK1LMWCjJ1rnAaso1uBNSZMYImBK_dE6Rq-ym0oKgRkyY5_OtLyg2-
      n0usMRTog2VPmCwIZQDg</SignableData>
    </SaleHeader>
  </SaleHeader>
  <ENC-TIK-NUM>34</ENC-TIK-NUM>
  <ENC-TIK-TAG-VER>8.1.12 alpha</ENC-TIK-TAG-VER>
  <ENC-TIK-PRN-NBR>1</ENC-TIK-PRN-NBR>
  <ENC-TIK-SOC-ETS>Pieuvre</ENC-TIK-SOC-ETS>
  <ENC-TIK-SOC-ADR>21 Av. des Champs-Élysées</ENC-TIK-SOC-ADR>
```

```

<ENC-TIK-SOC-CCP>75008</ENC-TIK-SOC-CCP>
<ENC-TIK-SOC-VIL>Paris</ENC-TIK-SOC-VIL>
<ENC-TIK-SOC-PAY>France</ENC-TIK-SOC-PAY>
<ENC-TIK-SOC-SIR>12345</ENC-TIK-SOC-SIR>
<ENC-TIK-SOC-NAF>1323C</ENC-TIK-SOC-NAF>
<ENC-TIK-SOC-TVA>1232332</ENC-TIK-SOC-TVA>
<ENC-TIK-VEN-NID>7766</ENC-TIK-VEN-NID>
<ENC-TIK-VEN-NOM>Panthère</ENC-TIK-VEN-NOM>
<ENC-TIK-OPS-NID>99</ENC-TIK-OPS-NID>
<ENC-TIK-OPS-NOM>CHD Supervisor</ENC-TIK-OPS-NOM>
<ENC-TIK-CAI-NID>POS#2534</ENC-TIK-CAI-NID>
<ENC-TIK-HOR-GDH>20180515160915</ENC-TIK-HOR-GDH>
<ENC-OPE-TYP>Sale</ENC-OPE-TYP>
<ENC-TIK-DOC-TYP>Receipt</ENC-TIK-DOC-TYP>
<ENC-TIK-LIG-NBR>1</ENC-TIK-LIG-NBR>
<ENC-TIK-STA>Production</ENC-TIK-STA>
<ENC-TIK-TAG-
SIG>CPYZ1kKSReNKBmZMKpjTnLTAGCFT1AITg4MyVgXuLmxhe_vqleTNpCJg5wFxl4WCo-r3Utc2ZCDe--
DW4yRTIK3YZt_lMd_lAYRe1yK8L7vCAPcyOqYzo3A16XZ9c2VJoixrpQyYE2S1P9rRfZZANrAld4n2UOkY892qu
YSu7XSQwf_B17NjncvKulLiDV2Q58No56TTsCtHeAizY9Jg9a9a1wLf9HztMALg0tYkclQy6AsVipEh3R_SFPVY3
3uMqDrFDJAW22WeMliFd0hMipr5h1SkchLD3-
kJImCzL6k5WkwQ62p0k9Zuil2yqqli_jBsFk6FMFc7mqjFo9RjOg</ENC-TIK-TAG-SIG>
<ENC-TIK-TAG-RET>B0123 (YKBj)</ENC-TIK-TAG-RET>

<PreviousSignature>jgeKS8AXiHCuDx7dbr2qeSWZ3JivpT2y8k2YqevKPiL0by8XmD0VrkeOtEea1WbcYGiBFSv
Vc2s45AT0VFz6fre-Pg6QSf0CxvF4bSKISdxx4DcD0mthTIT5-oe9MUU5FuuY64fUgjqlONDZxDzOtZrx-
qF3HxmBKa-
IWpjElpMUwLpwKw3c5o1KP1i0lkWiuJBmMcyYfjdv2DmufjO2eUawlWzD9I0L4U_dNEGkQj0J4P8G8G0kq2yTv
N-
p6IMYAGjgmJjxzevuXKV4sejxvHsu5TgELILHiE_yKEKkx3vXTjMB4wUrKe2YzeTxm9nKLExnZjiU15MIQiU3aTw
Og</PreviousSignature>

<SignableData>0000:599,599,20180515160915,34,Sale,O,jgeKS8AXiHCuDx7dbr2qeSWZ3JivpT2y8k2Yqe
vKPiL0by8XmD0VrkeOtEea1WbcYGiBFSvVc2s45AT0VFz6fre-Pg6QSf0CxvF4bSKISdxx4DcD0mthTIT5-
oe9MUU5FuuY64fUgjqlONDZxDzOtZrx-qF3HxmBKa-
IWpjElpMUwLpwKw3c5o1KP1i0lkWiuJBmMcyYfjdv2DmufjO2eUawlWzD9I0L4U_dNEGkQj0J4P8G8G0kq2yTv
N-
p6IMYAGjgmJjxzevuXKV4sejxvHsu5TgELILHiE_yKEKkx3vXTjMB4wUrKe2YzeTxm9nKLExnZjiU15MIQiU3aTw
Og</SignableData>
</SaleHeader>
<SaleHeader>
<ENC-TIK-NUM>35</ENC-TIK-NUM>
<ENC-TIK-TAG-VER>8.1.12 alpha</ENC-TIK-TAG-VER>
<ENC-TIK-PRN-NBR>1</ENC-TIK-PRN-NBR>
<ENC-TIK-SOC-ETS>Pieuvre</ENC-TIK-SOC-ETS>
<ENC-TIK-SOC-ADR>21 Av. des Champs-Élysées</ENC-TIK-SOC-ADR>
<ENC-TIK-SOC-CCP>75008</ENC-TIK-SOC-CCP>
<ENC-TIK-SOC-VIL>Paris</ENC-TIK-SOC-VIL>
<ENC-TIK-SOC-PAY>France</ENC-TIK-SOC-PAY>
<ENC-TIK-SOC-SIR>12345</ENC-TIK-SOC-SIR>
<ENC-TIK-SOC-NAF>1323C</ENC-TIK-SOC-NAF>
<ENC-TIK-SOC-TVA>1232332</ENC-TIK-SOC-TVA>
<ENC-TIK-VEN-NID>7766</ENC-TIK-VEN-NID>
<ENC-TIK-VEN-NOM>Panthère</ENC-TIK-VEN-NOM>
<ENC-TIK-OPS-NID>99</ENC-TIK-OPS-NID>
<ENC-TIK-OPS-NOM>CHD Supervisor</ENC-TIK-OPS-NOM>

```

```

<ENC-TIK-CAI-NID>POS#2534</ENC-TIK-CAI-NID>
<ENC-TIK-HOR-GDH>20180515160928</ENC-TIK-HOR-GDH>
<ENC-OPE-TYP>Sale</ENC-OPE-TYP>
<ENC-TIK-DOC-TYP>Receipt</ENC-TIK-DOC-TYP>
<ENC-TIK-LIG-NBR>2</ENC-TIK-LIG-NBR>
<ENC-TIK-STA>Production</ENC-TIK-STA>
<ENC-TIK-TAG-SIG>CP0K0HNwhjo9znIK0U05tbhs-
r6GI_5BzIoEAvtLLOzVo7ccVLp9PWDE9VEFXxOM0yMI-8B-
P0EoABWtGfTKZ09CtVtUplyObI3cpHUzEUQjGXEu_qAsVQpxQvjINlvd7orWTuaR9TJSeImbjM2zirsUtMhWbfpfr
jWyjdUD0fjnNPXcoef1Qdlkj4eOU4fo8-
tYXkHSZ7DclMjvMRYOs03DcmFJji2Ehckv4y0JphGzaBcjs6zBVYOThpewnw0ggjGdNSYgBRI6imjVqk_WvjZLigh
c7obCRnNdwKfm3Gdc6rW2dl_-awQ_bDaFkl_fprg5p159Tp5IZzWeu0Fw</ENC-TIK-TAG-SIG>
<ENC-TIK-TAG-RET>B0123 (0Nz0)</ENC-TIK-TAG-RET>

<PreviousSignature>CPYZ1kKSReNKBmZMKpjTnLTAGCFT1AITg4MyVgXuLmxhe_vqleTNpCJg5wFxl4WCo-
r3Utc2ZCDe--
DW4yRTIK3Yzt_IMd_IAYRe1yK8L7vCAPcyOqYzo3A16XZ9c2VJoixrpQyYE2S1P9rRfZZANrAld4n2UOkY892qu
YSu7XSQwf_B17NjncvKulLiDV2Q58No56TTsCtHeAizY9Jg9a9a1wLf9HztMALg0tYkclQy6AsVipEh3R_SFPVY3
3uMqDrFDJAW22WeMliFd0hMipr5h1SkchLD3-
kJImCzL6k5WkwQ62p0k9Zuil2yqqli_jBsFk6FMFc7mqjFo9RjOg</PreviousSignature>

<SignableData>0500:899|0000:145,1044,20180515160928,35,Sale,O,CPYZ1kKSReNKBmZMKpjTnLTAGC
FT1AITg4MyVgXuLmxhe_vqleTNpCJg5wFxl4WCo-r3Utc2ZCDe--
DW4yRTIK3Yzt_IMd_IAYRe1yK8L7vCAPcyOqYzo3A16XZ9c2VJoixrpQyYE2S1P9rRfZZANrAld4n2UOkY892qu
YSu7XSQwf_B17NjncvKulLiDV2Q58No56TTsCtHeAizY9Jg9a9a1wLf9HztMALg0tYkclQy6AsVipEh3R_SFPVY3
3uMqDrFDJAW22WeMliFd0hMipr5h1SkchLD3-
kJImCzL6k5WkwQ62p0k9Zuil2yqqli_jBsFk6FMFc7mqjFo9RjOg</SignableData>

</SaleHeader>
<SaleHeader>
<ENC-TIK-NUM>36</ENC-TIK-NUM>
<ENC-TIK-TAG-VER>8.1.12 alpha</ENC-TIK-TAG-VER>
<ENC-TIK-PRN-NBR>1</ENC-TIK-PRN-NBR>
<ENC-TIK-SOC-ETS>Pieuvre</ENC-TIK-SOC-ETS>
<ENC-TIK-SOC-ADR>21 Av. des Champs-Élysées</ENC-TIK-SOC-ADR>
<ENC-TIK-SOC-CCP>75008</ENC-TIK-SOC-CCP>
<ENC-TIK-SOC-VIL>Paris</ENC-TIK-SOC-VIL>
<ENC-TIK-SOC-PAY>France</ENC-TIK-SOC-PAY>
<ENC-TIK-SOC-SIR>12345</ENC-TIK-SOC-SIR>
<ENC-TIK-SOC-NAF>1323C</ENC-TIK-SOC-NAF>
<ENC-TIK-SOC-TVA>1232332</ENC-TIK-SOC-TVA>
<ENC-TIK-VEN-NID>7766</ENC-TIK-VEN-NID>
<ENC-TIK-VEN-NOM>Panthère</ENC-TIK-VEN-NOM>
<ENC-TIK-OPS-NID>99</ENC-TIK-OPS-NID>
<ENC-TIK-OPS-NOM>CHD Supervisor</ENC-TIK-OPS-NOM>
<ENC-TIK-CAI-NID>POS#2534</ENC-TIK-CAI-NID>
<ENC-TIK-HOR-GDH>20180515160942</ENC-TIK-HOR-GDH>
<ENC-OPE-TYP>Sale</ENC-OPE-TYP>
<ENC-TIK-DOC-TYP>Receipt</ENC-TIK-DOC-TYP>
<ENC-TIK-LIG-NBR>1</ENC-TIK-LIG-NBR>
<ENC-TIK-STA>Production</ENC-TIK-STA>
<ENC-TIK-TAG-SIG>Uzb9oGVT15i7ERLIWjV5b_vQBLnrTZAXHfCyP8ulfsR_MYPjzssryC2U4_2mf-
JWHSCCX2ojb64CjyOHvcMi1q8avK64JpSCG5JL8gzz1yfYOFijlqftmmMXggFRZGiSRtALiBbWBrWAUkyvZHmet
38x88rFhsTkDx7TAIp5M-IOdhu1d0w0X4YRDBa-GpAi-z16SmpHXG2yGMt-
MbVpIxx7lxGhfT6fBdpTldxFNlOn3B-X7Yjx1TaHko7Z6Pf7Y8DKIZd0PoqE6_Q1IhiyR97Ik4SHkrSD-
vNS06JkxKZqZeRR2ykBQMvxOLSZ8G3vNbFbq0ovDMITPXUlw</ENC-TIK-TAG-SIG>
<ENC-TIK-TAG-RET>B0123 (bVEV)</ENC-TIK-TAG-RET>

```

```

<PreviousSignature>CP0K0HNwhjo9znIK0U05tbhs-
r6GI_5BzIoEAtvLLOzVo7ccVLp9PWDE9VEFXxOM0yMI-8B-
P0EoABWtGFTKZ09CtVtUplyObI3cpHUzEUQjGXEu_qAsVQpxQvjINlvd7orWTuaR9TJSeImbjM2zirsUtMhWbfpfr
jWyjdUDOfjnNPXcoef1Qdlkj4eOU4fo8-
tYXkHSZ7DclMjvMRYOs03DcmFJji2Ehckv4y0JphGzaBcjs6zBVYOThpeewn0ggjGdNSYgBRI6imjVqk_WvjZLigh
c7obCRnNdwKfm3Gdc6rW2dl_-awQ_bDaFkl_fprg5p159Tp5IZzWeu0Fw</PreviousSignature>

<SignableData>1800:478,478,20180515160942,36,Sale,O,CP0K0HNwhjo9znIK0U05tbhs-
r6GI_5BzIoEAtvLLOzVo7ccVLp9PWDE9VEFXxOM0yMI-8B-
P0EoABWtGFTKZ09CtVtUplyObI3cpHUzEUQjGXEu_qAsVQpxQvjINlvd7orWTuaR9TJSeImbjM2zirsUtMhWbfpfr
jWyjdUDOfjnNPXcoef1Qdlkj4eOU4fo8-
tYXkHSZ7DclMjvMRYOs03DcmFJji2Ehckv4y0JphGzaBcjs6zBVYOThpeewn0ggjGdNSYgBRI6imjVqk_WvjZLigh
c7obCRnNdwKfm3Gdc6rW2dl_-awQ_bDaFkl_fprg5p159Tp5IZzWeu0Fw</SignableData>

</SaleHeader>
</SaleHeaderTable>
<SaleDataTable>
  <SaleData>
    <ENC-NID>338</ENC-NID>
    <ENC-TIK-ORI-NUM>33</ENC-TIK-ORI-NUM>
    <ENC-TIK-LIG-NUM>1</ENC-TIK-LIG-NUM>
    <ENC-TIK-LIG-PRO-NID>1005</ENC-TIK-LIG-PRO-NID>
    <ENC-TIK-LIG-PRO-LIB>Test ar 5%</ENC-TIK-LIG-PRO-LIB>
    <ENC-TIK-LIG-PRO-QTE>1</ENC-TIK-LIG-PRO-QTE>
    <ENC-TIK-LIG-TAX-NID>C</ENC-TIK-LIG-TAX-NID>
    <ENC-TIK-LIG-TAX-TXX>5.0000</ENC-TIK-LIG-TAX-TXX>
    <ENC-TIK-LIG-PRO-TTC>7.25</ENC-TIK-LIG-PRO-TTC>
    <ENC-TIK-LIG-TOT-MHT>6.9</ENC-TIK-LIG-TOT-MHT>
    <ENC-TIK-LIG-TOT-TTC>7.25</ENC-TIK-LIG-TOT-TTC>
    <ENC-TIK-LIG-HOR-GDH>20180515160907</ENC-TIK-LIG-HOR-GDH>
  </SaleData>
  <SaleData>
    <ENC-NID>339</ENC-NID>
    <ENC-TIK-ORI-NUM>33</ENC-TIK-ORI-NUM>
    <ENC-TIK-LIG-NUM>2</ENC-TIK-LIG-NUM>
    <ENC-TIK-LIG-PRO-NID>1018</ENC-TIK-LIG-PRO-NID>
    <ENC-TIK-LIG-PRO-LIB>Test ar 18%</ENC-TIK-LIG-PRO-LIB>
    <ENC-TIK-LIG-PRO-QTE>5</ENC-TIK-LIG-PRO-QTE>
    <ENC-TIK-LIG-TAX-NID>B</ENC-TIK-LIG-TAX-NID>
    <ENC-TIK-LIG-TAX-TXX>18.0000</ENC-TIK-LIG-TAX-TXX>
    <ENC-TIK-LIG-PRO-TTC>1.23</ENC-TIK-LIG-PRO-TTC>
    <ENC-TIK-LIG-TOT-MHT>5.21</ENC-TIK-LIG-TOT-MHT>
    <ENC-TIK-LIG-TOT-TTC>6.15</ENC-TIK-LIG-TOT-TTC>
    <ENC-TIK-LIG-HOR-GDH>20180515160907</ENC-TIK-LIG-HOR-GDH>
  </SaleData>
  <SaleData>
    <ENC-NID>340</ENC-NID>
    <ENC-TIK-ORI-NUM>34</ENC-TIK-ORI-NUM>
    <ENC-TIK-LIG-NUM>1</ENC-TIK-LIG-NUM>
    <ENC-TIK-LIG-PRO-NID>100Z</ENC-TIK-LIG-PRO-NID>
    <ENC-TIK-LIG-PRO-LIB>Test ar Z</ENC-TIK-LIG-PRO-LIB>
    <ENC-TIK-LIG-PRO-QTE>1</ENC-TIK-LIG-PRO-QTE>
    <ENC-TIK-LIG-TAX-NID>Z</ENC-TIK-LIG-TAX-NID>
    <ENC-TIK-LIG-TAX-TXX>0.0000</ENC-TIK-LIG-TAX-TXX>
    <ENC-TIK-LIG-PRO-TTC>5.99</ENC-TIK-LIG-PRO-TTC>
    <ENC-TIK-LIG-TOT-MHT>5.99</ENC-TIK-LIG-TOT-MHT>
    <ENC-TIK-LIG-TOT-TTC>5.99</ENC-TIK-LIG-TOT-TTC>
    <ENC-TIK-LIG-HOR-GDH>20180515160915</ENC-TIK-LIG-HOR-GDH>
  </SaleData>

```

```
</SaleData>
<SaleData>
  <ENC-NID>341</ENC-NID>
  <ENC-TIK-ORI-NUM>35</ENC-TIK-ORI-NUM>
  <ENC-TIK-LIG-NUM>1</ENC-TIK-LIG-NUM>
  <ENC-TIK-LIG-PRO-NID>1000</ENC-TIK-LIG-PRO-NID>
  <ENC-TIK-LIG-PRO-LIB>Test ar 0%</ENC-TIK-LIG-PRO-LIB>
  <ENC-TIK-LIG-PRO-QTE>1</ENC-TIK-LIG-PRO-QTE>
  <ENC-TIK-LIG-TAX-NID>A</ENC-TIK-LIG-TAX-NID>
  <ENC-TIK-LIG-TAX-TXX>0.0000</ENC-TIK-LIG-TAX-TXX>
  <ENC-TIK-LIG-PRO-TTC>1.45</ENC-TIK-LIG-PRO-TTC>
  <ENC-TIK-LIG-TOT-MHT>1.45</ENC-TIK-LIG-TOT-MHT>
  <ENC-TIK-LIG-TOT-TTC>1.45</ENC-TIK-LIG-TOT-TTC>
  <ENC-TIK-LIG-HOR-GDH>20180515160928</ENC-TIK-LIG-HOR-GDH>
</SaleData>
<SaleData>
  <ENC-NID>342</ENC-NID>
  <ENC-TIK-ORI-NUM>35</ENC-TIK-ORI-NUM>
  <ENC-TIK-LIG-NUM>2</ENC-TIK-LIG-NUM>
  <ENC-TIK-LIG-PRO-NID>1005</ENC-TIK-LIG-PRO-NID>
  <ENC-TIK-LIG-PRO-LIB>Test ar 5%</ENC-TIK-LIG-PRO-LIB>
  <ENC-TIK-LIG-PRO-QTE>1</ENC-TIK-LIG-PRO-QTE>
  <ENC-TIK-LIG-TAX-NID>C</ENC-TIK-LIG-TAX-NID>
  <ENC-TIK-LIG-TAX-TXX>5.0000</ENC-TIK-LIG-TAX-TXX>
  <ENC-TIK-LIG-PRO-TTC>8.99</ENC-TIK-LIG-PRO-TTC>
  <ENC-TIK-LIG-TOT-MHT>8.56</ENC-TIK-LIG-TOT-MHT>
  <ENC-TIK-LIG-TOT-TTC>8.99</ENC-TIK-LIG-TOT-TTC>
  <ENC-TIK-LIG-HOR-GDH>20180515160928</ENC-TIK-LIG-HOR-GDH>
</SaleData>
<SaleData>
  <ENC-NID>343</ENC-NID>
  <ENC-TIK-ORI-NUM>36</ENC-TIK-ORI-NUM>
  <ENC-TIK-LIG-NUM>1</ENC-TIK-LIG-NUM>
  <ENC-TIK-LIG-PRO-NID>1018</ENC-TIK-LIG-PRO-NID>
  <ENC-TIK-LIG-PRO-LIB>Test ar 18%</ENC-TIK-LIG-PRO-LIB>
  <ENC-TIK-LIG-PRO-QTE>1</ENC-TIK-LIG-PRO-QTE>
  <ENC-TIK-LIG-TAX-NID>B</ENC-TIK-LIG-TAX-NID>
  <ENC-TIK-LIG-TAX-TXX>18.0000</ENC-TIK-LIG-TAX-TXX>
  <ENC-TIK-LIG-PRO-TTC>4.78</ENC-TIK-LIG-PRO-TTC>
  <ENC-TIK-LIG-TOT-MHT>4.05</ENC-TIK-LIG-TOT-MHT>
  <ENC-TIK-LIG-TOT-TTC>4.78</ENC-TIK-LIG-TOT-TTC>
  <ENC-TIK-LIG-HOR-GDH>20180515160942</ENC-TIK-LIG-HOR-GDH>
</SaleData>
</SaleDataTable>
<SaleVATTable>
  <SaleVAT>
    <ENC-TIK-NUM>33</ENC-TIK-NUM>
    <ENC-TIK-TOT-MHT>6.90</ENC-TIK-TOT-MHT>
    <ENC-TIK-TVA-NID>C</ENC-TIK-TVA-NID>
    <ENC-TIK-TVA-TXX>5.0000</ENC-TIK-TVA-TXX>
    <ENC-TIK-TVA-MTN>0.35</ENC-TIK-TVA-MTN>
    <ENC-TIK-TOT-TTC>7.25</ENC-TIK-TOT-TTC>
  </SaleVAT>
  <SaleVAT>
    <ENC-TIK-NUM>33</ENC-TIK-NUM>
    <ENC-TIK-TOT-MHT>5.21</ENC-TIK-TOT-MHT>
```



```

<ENC-TIK-TVA-NID>B</ENC-TIK-TVA-NID>
<ENC-TIK-TVA-TXX>18.0000</ENC-TIK-TVA-TXX>
<ENC-TIK-TVA-MTN>0.94</ENC-TIK-TVA-MTN>
<ENC-TIK-TOT-TTC>6.15</ENC-TIK-TOT-TTC>
</SaleVAT>
<SaleVAT>
  <ENC-TIK-NUM>34</ENC-TIK-NUM>
  <ENC-TIK-TOT-MHT>5.99</ENC-TIK-TOT-MHT>
  <ENC-TIK-TVA-NID>Z</ENC-TIK-TVA-NID>
  <ENC-TIK-TVA-TXX>0.0000</ENC-TIK-TVA-TXX>
  <ENC-TIK-TVA-MTN>0.00</ENC-TIK-TVA-MTN>
  <ENC-TIK-TOT-TTC>5.99</ENC-TIK-TOT-TTC>
</SaleVAT>
<SaleVAT>
  <ENC-TIK-NUM>35</ENC-TIK-NUM>
  <ENC-TIK-TOT-MHT>8.56</ENC-TIK-TOT-MHT>
  <ENC-TIK-TVA-NID>C</ENC-TIK-TVA-NID>
  <ENC-TIK-TVA-TXX>5.0000</ENC-TIK-TVA-TXX>
  <ENC-TIK-TVA-MTN>0.43</ENC-TIK-TVA-MTN>
  <ENC-TIK-TOT-TTC>8.99</ENC-TIK-TOT-TTC>
</SaleVAT>
<SaleVAT>
  <ENC-TIK-NUM>35</ENC-TIK-NUM>
  <ENC-TIK-TOT-MHT>1.45</ENC-TIK-TOT-MHT>
  <ENC-TIK-TVA-NID>A</ENC-TIK-TVA-NID>
  <ENC-TIK-TVA-TXX>0.0000</ENC-TIK-TVA-TXX>
  <ENC-TIK-TVA-MTN>0.00</ENC-TIK-TVA-MTN>
  <ENC-TIK-TOT-TTC>1.45</ENC-TIK-TOT-TTC>
</SaleVAT>
<SaleVAT>
  <ENC-TIK-NUM>36</ENC-TIK-NUM>
  <ENC-TIK-TOT-MHT>4.05</ENC-TIK-TOT-MHT>
  <ENC-TIK-TVA-NID>B</ENC-TIK-TVA-NID>
  <ENC-TIK-TVA-TXX>18.0000</ENC-TIK-TVA-TXX>
  <ENC-TIK-TVA-MTN>0.73</ENC-TIK-TVA-MTN>
  <ENC-TIK-TOT-TTC>4.78</ENC-TIK-TOT-TTC>
</SaleVAT>
</SaleVATTable>
<SaleTotalTable>
  <SaleTotal>
    <ENC-TIK-NUM>33</ENC-TIK-NUM>
    <ENC-TIK-TOT-MHT>12.11</ENC-TIK-TOT-MHT>
    <ENC-TIK-TOT-TTC>13.40</ENC-TIK-TOT-TTC>
  </SaleTotal>
  <SaleTotal>
    <ENC-TIK-NUM>34</ENC-TIK-NUM>
    <ENC-TIK-TOT-MHT>5.99</ENC-TIK-TOT-MHT>
    <ENC-TIK-TOT-TTC>5.99</ENC-TIK-TOT-TTC>
  </SaleTotal>
  <SaleTotal>
    <ENC-TIK-NUM>35</ENC-TIK-NUM>
    <ENC-TIK-TOT-MHT>10.01</ENC-TIK-TOT-MHT>
    <ENC-TIK-TOT-TTC>10.44</ENC-TIK-TOT-TTC>
  </SaleTotal>
  <SaleTotal>
    <ENC-TIK-NUM>36</ENC-TIK-NUM>

```

```

    <ENC-TIK-TOT-MHT>4.05</ENC-TIK-TOT-MHT>
    <ENC-TIK-TOT-TTC>4.78</ENC-TIK-TOT-TTC>
  </SaleTotal>
</SaleTotalTable>
<SaleComplementaryTable>
  <SaleComplementary>
    <ENC-TIK-NUM>33</ENC-TIK-NUM>
    <ENC-TIK-TOT-TTC>13.40</ENC-TIK-TOT-TTC>
  </SaleComplementary>
  <SaleComplementary>
    <ENC-TIK-NUM>34</ENC-TIK-NUM>
    <ENC-TIK-TOT-TTC>5.99</ENC-TIK-TOT-TTC>
  </SaleComplementary>
  <SaleComplementary>
    <ENC-TIK-NUM>35</ENC-TIK-NUM>
    <ENC-TIK-TOT-TTC>10.44</ENC-TIK-TOT-TTC>
  </SaleComplementary>
  <SaleComplementary>
    <ENC-TIK-NUM>36</ENC-TIK-NUM>
    <ENC-TIK-TOT-TTC>4.78</ENC-TIK-TOT-TTC>
  </SaleComplementary>
</SaleComplementaryTable>
<SaleRegulationTable>
  <SaleRegulation>
    <ENC-TIK-ORI-NUM>33</ENC-TIK-ORI-NUM>
    <ENC-TIK-REG-MOD-LIB>Sk.nauda</ENC-TIK-REG-MOD-LIB>
    <ENC-TIK-REG-MTN>13.40</ENC-TIK-REG-MTN>
    <ENC-TIK-REG-DEV-TDC>1.00000</ENC-TIK-REG-DEV-TDC>
    <ENC-TIK-REG-OPE-TYP>Sale</ENC-TIK-REG-OPE-TYP>
    <ENC-TIK-REG-USR-NID>99</ENC-TIK-REG-USR-NID>
    <ENC-TIK-REG-HOR-GDH>20180515160907</ENC-TIK-REG-HOR-GDH>
  </SaleRegulation>
  <SaleRegulation>
    <ENC-TIK-ORI-NUM>34</ENC-TIK-ORI-NUM>
    <ENC-TIK-REG-MOD-LIB>Sk.nauda</ENC-TIK-REG-MOD-LIB>
    <ENC-TIK-REG-MTN>5.99</ENC-TIK-REG-MTN>
    <ENC-TIK-REG-DEV-TDC>1.00000</ENC-TIK-REG-DEV-TDC>
    <ENC-TIK-REG-OPE-TYP>Sale</ENC-TIK-REG-OPE-TYP>
    <ENC-TIK-REG-USR-NID>99</ENC-TIK-REG-USR-NID>
    <ENC-TIK-REG-HOR-GDH>20180515160915</ENC-TIK-REG-HOR-GDH>
  </SaleRegulation>
  <SaleRegulation>
    <ENC-TIK-ORI-NUM>35</ENC-TIK-ORI-NUM>
    <ENC-TIK-REG-MOD-LIB>Sk.nauda</ENC-TIK-REG-MOD-LIB>
    <ENC-TIK-REG-MTN>10.44</ENC-TIK-REG-MTN>
    <ENC-TIK-REG-DEV-TDC>1.00000</ENC-TIK-REG-DEV-TDC>
    <ENC-TIK-REG-OPE-TYP>Sale</ENC-TIK-REG-OPE-TYP>
    <ENC-TIK-REG-USR-NID>99</ENC-TIK-REG-USR-NID>
    <ENC-TIK-REG-HOR-GDH>20180515160928</ENC-TIK-REG-HOR-GDH>
  </SaleRegulation>
  <SaleRegulation>
    <ENC-TIK-ORI-NUM>36</ENC-TIK-ORI-NUM>
    <ENC-TIK-REG-MOD-LIB>Sk.nauda</ENC-TIK-REG-MOD-LIB>
    <ENC-TIK-REG-MTN>4.78</ENC-TIK-REG-MTN>
    <ENC-TIK-REG-DEV-TDC>1.00000</ENC-TIK-REG-DEV-TDC>
    <ENC-TIK-REG-OPE-TYP>Sale</ENC-TIK-REG-OPE-TYP>

```

```

<ENC-TIK-REG-USR-NID>99</ENC-TIK-REG-USR-NID>
<ENC-TIK-REG-HOR-GDH>20180515160942</ENC-TIK-REG-HOR-GDH>
</SaleRegulation>
</SaleRegulationTable>
<DuplicataTable>
  <Duplicata>
    <ENC-DUP-NID>10</ENC-DUP-NID>
    <ENC-DUP-ORI-NUM>35</ENC-DUP-ORI-NUM>
    <ENC-DUP-TYP>Ticket</ENC-DUP-TYP>
    <ENC-DUP-PRN-NUM>1</ENC-DUP-PRN-NUM>
    <ENC-DUP-OPS-NID>99</ENC-DUP-OPS-NID>
    <ENC-DUP-HOR-GDH>20180515160931</ENC-DUP-HOR-GDH>
    <ENC-DUP-TAG-SIG>HzlHsxrp4sAxmUNxZhPj9eegAVE9Sp6J6JosmFHXcklcZ0YnsqEZI-
sMfJl8Y0vA0KbvHG-
cC3qefaEDr0g8QY6RaVhSfNoED0Lu9wv19RVIP2Ojmor50GoMgbtF4vHojmJdFqYu2DNJqF9Yjzmvx0QRIfg9d
2bt5cb7__zc5Q-L-
dfufgbUKB3T_7kTQPqyZCzHmJ8wcsK1a5KoOt2wE8UbyKkONB74S8kAiIDAJbyFid0Q5v36y51Zkhqo6iv9x46
KCH0xuST-4bESSKIMSlultAS5uJuf_InoHfi3vltAMwfAdO5yV0atgtAJfqYu1zBNpuO7U8iHcRa9bJh5Kw</ENC-
DUP-TAG-SIG>
    <PreviousSignature>l6SAkH6am9phK9_8wh-VB1BZHqkbjJV7d8deUHwLBGrIXoPBCNYe-
dfYHEq5BjGjKwzgl62_dkxSNzQFAD6vjkgEB8_POOMkFrURrgzo1DYRR576nT3jtY37gMJaJRDt3SVEEfTp5x3n
rH7zW0NOGRbSkps5OyUzVzW6nS_kAt_UiPBAJ0I0PIrGbA84bOzCVBkYWBNOsY96rAilBCgcGDmsP3Y__xMv
5PbctmQ3k6cdOCdMvY5my-KgvRqIAPHyEnjHAFtgN704I0cal0E0vZjXqYDeO3CudN002wH3O-
2Ox7ZnmEsemT4JwDBGk_oyNqsd_1HKFpGZ1AzxN5Cg</PreviousSignature>
    <SignableData>10,Ticket,1,99,20180515160931,35,O,l6SAkH6am9phK9_8wh-
VB1BZHqkbjJV7d8deUHwLBGrIXoPBCNYe-
dfYHEq5BjGjKwzgl62_dkxSNzQFAD6vjkgEB8_POOMkFrURrgzo1DYRR576nT3jtY37gMJaJRDt3SVEEfTp5x3n
rH7zW0NOGRbSkps5OyUzVzW6nS_kAt_UiPBAJ0I0PIrGbA84bOzCVBkYWBNOsY96rAilBCgcGDmsP3Y__xMv
5PbctmQ3k6cdOCdMvY5my-KgvRqIAPHyEnjHAFtgN704I0cal0E0vZjXqYDeO3CudN002wH3O-
2Ox7ZnmEsemT4JwDBGk_oyNqsd_1HKFpGZ1AzxN5Cg</SignableData>
  </Duplicata>
  <Duplicata>
    <ENC-DUP-NID>11</ENC-DUP-NID>
    <ENC-DUP-ORI-NUM>35</ENC-DUP-ORI-NUM>
    <ENC-DUP-TYP>Ticket</ENC-DUP-TYP>
    <ENC-DUP-PRN-NUM>2</ENC-DUP-PRN-NUM>
    <ENC-DUP-OPS-NID>99</ENC-DUP-OPS-NID>
    <ENC-DUP-HOR-GDH>20180515160933</ENC-DUP-HOR-GDH>
    <ENC-DUP-TAG-SIG>Y8y8z-
7p5IxfBYukdol2VtLqKVxyXOWHhXV7nnAWWH7N6l_Rf4P2_WR12ObNmmGMQbRMAW7thhpV2KJSmClh0x28
114tLtwiY3bq97_JV1EvGEXAU4Kir5EAirxbRh7yDsz-yNQGqETNolFA6WluNHfpkp2LHYQuQh11zlh-
22etC5zJ1aj65IlyT0cPXgUNTW1RELy02-Pxg_cDOiwM01NY3nDx_53CdIpHri6o0gRAIJSil0U-UJ-
VJUzSGoC_7qOJZrlotKrvUNR4Q31fmUJnaAT-IgogEDoAP_dZ3o7dWAXYdcZL5jkzSFEeQZpCjJQ2H-
v18qk4wr8xqSPpFA</ENC-DUP-TAG-SIG>
    <PreviousSignature>HzlHsxrp4sAxmUNxZhPj9eegAVE9Sp6J6JosmFHXcklcZ0YnsqEZI-
sMfJl8Y0vA0KbvHG-
cC3qefaEDr0g8QY6RaVhSfNoED0Lu9wv19RVIP2Ojmor50GoMgbtF4vHojmJdFqYu2DNJqF9Yjzmvx0QRIfg9d
2bt5cb7__zc5Q-L-
dfufgbUKB3T_7kTQPqyZCzHmJ8wcsK1a5KoOt2wE8UbyKkONB74S8kAiIDAJbyFid0Q5v36y51Zkhqo6iv9x46
KCH0xuST-
4bESSKIMSlultAS5uJuf_InoHfi3vltAMwfAdO5yV0atgtAJfqYu1zBNpuO7U8iHcRa9bJh5Kw</PreviousSignature>
  >

  <SignableData>11,Ticket,2,99,20180515160933,35,O,HzlHsxrp4sAxmUNxZhPj9eegAVE9Sp6J6JosmFHXc
klcZ0YnsqEZI-sMfJl8Y0vA0KbvHG-
cC3qefaEDr0g8QY6RaVhSfNoED0Lu9wv19RVIP2Ojmor50GoMgbtF4vHojmJdFqYu2DNJqF9Yjzmvx0QRIfg9d

```

```

2bt5cb7__zc5Q-L-
dfufgbUKB3T_7kTQPqYCzHmJ8wcsK1a5KoOt2wE8UbyKkONB74S8kAiIDAJbyFid0Q5v36y51Zkhqo6iv9x46
KCH0xuST-
4bESSKIMSultAS5ujuf_InoHfi3vltAMwfAdO5yV0atgtAJfqYu1zBNpuO7U8iHcRa9bJh5Kw</SignableData>
</Duplicata>
<Duplicata>
  <ENC-DUP-NID>12</ENC-DUP-NID>
  <ENC-DUP-ORI-NUM>36</ENC-DUP-ORI-NUM>
  <ENC-DUP-TYP>Ticket</ENC-DUP-TYP>
  <ENC-DUP-PRN-NUM>1</ENC-DUP-PRN-NUM>
  <ENC-DUP-OPS-NID>99</ENC-DUP-OPS-NID>
  <ENC-DUP-HOR-GDH>20180515160943</ENC-DUP-HOR-GDH>
  <ENC-DUP-TAG-SIG>f4UNYZKQpUlliG_tvSfHCEs1c5thY-
B5mriUDGEjQEEaZrm__O99ktw7_Pi8UZdABk9Y6EgmmO62T-fi8f-XV34tULdKAj-
8t8rDb5ku7PUa4YK0o9hFs3-TddKjJTCG8362my5lhDadrYMCmwE1DD0Pnvb-iWV--3DZWlXm-
EhHOHNp512aIPQ_08lJLqqs7JazFBKXdKm_hHwS64d1Cp1Lk4_TkI9iIXDufKucXzQ9Bqfghrr-
gLurIM_p64MFONNVKeUWICx_cvUiMz2QxVPrBFXYkhZ9my4P9UxTkst2j_0tc9rjWf3VxIUZAQS9Lqi0wQqKSxV
HdjVMQWMA_g</ENC-DUP-TAG-SIG>
  <PreviousSignature>Y8y8z-
7p5lxfBYukdol2VtLqKVxyXOWHhXV7nnAWWH7N6l_Rf4P2_WR12ObNmmGMQbRMAW7thhpV2KJSmClh0x28
114tLTwiY3bq97_JV1EvGEXAU4Kir5EAirxbRh7yDsz-yNQCqETNoIFA6WluNHfpgp2LHYQuQh11zlh-
22etC5zj1aj65llyT0cPXgUNTW1RELy02-Pxg_cDOiwM01NY3nDx_53CdIpHri6o0gRAIjsiI0U-UJ-
VJUzSGoC_7qOJZrlotKrvUNR4Q31fmUJnaAT-IgogEDoaP_dZ3o7dWAXYdcZL5jkzSFEEQZpCjJQ2H-
v18qk4wr8xqSPPfA</PreviousSignature>
  <SignableData>12,Ticket,1,99,20180515160943,36,O,Y8y8z-
7p5lxfBYukdol2VtLqKVxyXOWHhXV7nnAWWH7N6l_Rf4P2_WR12ObNmmGMQbRMAW7thhpV2KJSmClh0x28
114tLTwiY3bq97_JV1EvGEXAU4Kir5EAirxbRh7yDsz-yNQCqETNoIFA6WluNHfpgp2LHYQuQh11zlh-
22etC5zj1aj65llyT0cPXgUNTW1RELy02-Pxg_cDOiwM01NY3nDx_53CdIpHri6o0gRAIjsiI0U-UJ-
VJUzSGoC_7qOJZrlotKrvUNR4Q31fmUJnaAT-IgogEDoaP_dZ3o7dWAXYdcZL5jkzSFEEQZpCjJQ2H-
v18qk4wr8xqSPPfA</SignableData>
</Duplicata>
</DuplicataTable>
<GrandTotalTable>
  <GrandTotal>
    <ENC-GTX-NID>166</ENC-GTX-NID>
    <ENC-GTX-TYP>Ticket</ENC-GTX-TYP>
    <ENC-GTX-ORI-NID>33</ENC-GTX-ORI-NID>
    <ENC-GTX-TIK-MTN-TVA-TTC>0000:26118|0500:14684|1800:44837|0000:2271</ENC-GTX-TIK-
MTN-TVA-TTC>
    <ENC-GTX-TIK-TOT-TTC>811.75</ENC-GTX-TIK-TOT-TTC>
    <ENC-GTX-TIK-PER-TOT-TTC>925.53</ENC-GTX-TIK-PER-TOT-TTC>
    <ENC-GTX-TIK-HOR-GDH>20180515160907</ENC-GTX-TIK-HOR-GDH>
    <ENC-GTX-TIK-TAG-SIG>JnOlnTbyr1Tcd8l-7qnZMzB5v1og8RYmtk0w6-
ZocTGsVRtCpnUtX3yVjfn_ph3JccXKVaZb2MkA-is50F5C2mGeUliecuKWG9W2-
zLPuSf3E8Djtl80WpHEY8QKHvapSRtqDc3WipiQQizt5uHvsAvEequnBRIB7FPC4JjvezxmYD7fcy29sZaOQVZgjH
vF1bie_31178NNPNJTSu1MW4uN-GTAOUT2-CNIRff4a-
S8l0kQSIg0zabKre0XH6xwjt6g7xOefGpCtApSgLhOcwuyxz350NhV3C9dFoQ8DANfCy4lChREozwtNLCBZTzD
ROAC-_kgO_Rtvs9Kq_o5-w</ENC-GTX-TIK-TAG-SIG>
    <PreviousSignature>Wg7GWUL_mHhir8-B-eOrxWw0S3_qCjg_sM8pJmuSpzA64H9FqCY-
CrP1esauAluhRh-D9Gc4IYoDTtYl-
XYlh8UPur6np0qhHJVDGKsFVyoPsx6RLFiDWZWYnbnm7Sq9jo0dxxvnFovEKm15cKGSTUNMPvURgMD6A7ag-
eiEGZtolhzXgcMBB6kR3Bcow_XjG4Mmu-
VRqMMwYeP4L6sXyoF6VfJrqAt3RVuXtoBhFx67FqeElFiX6qRQ069uOtZW6VdeeGWt4DcUsPUDM1LfxyV-
IAkG8nd7L2QrDhvY7Z3Pqf3twzAceJipvKZGnqrbaWQ_IbX-lyg8TI0002jv_SQ</PreviousSignature>

<SignableData>0000:26118|0500:14684|1800:44837|0000:2271,811.75,20180515160907,33,O,Wg7G

```

```

WUL_mHhir8-B-eOrxWw0S3_qCjg_sM8pJmuSpzA64H9FqCY-CrP1esauAluhRh-D9Gc4IYoDTtYI-
XYIh8UPur6np0qhHJVdGKsFVyoPxx6RLFiDWZWybnm7Sq9jo0dxxvnFovEkM15cKGSTUNMPvURgMD6A7ag-
eiEGZtolhzXgcMBB6kR3Bcow_XjG4Mmu-
VRqMMwYeP4L6sXyoF6VfJrqAt3RVuXtoBhF67FqeElFiX6gRQ069uOtZW6VdeeGwt4DcUsPUdM1LfxyV-
IAkG8nd7L2QrDhvY7Z3Pqf3twzAceJipvKZGnqrbaWQ_IBx-lyg8TI0002jv_SQ</SignableData>
</GrandTotal>
<GrandTotal>
  <ENC-GTX-NID>167</ENC-GTX-NID>
  <ENC-GTX-TYP>Ticket</ENC-GTX-TYP>
  <ENC-GTX-ORI-NID>34</ENC-GTX-ORI-NID>
  <ENC-GTX-TIK-MTN-TVA-TTC>0000:26118|0500:14684|1800:44837|0000:2870</ENC-GTX-TIK-
MTN-TVA-TTC>
  <ENC-GTX-TIK-TOT-TTC>817.74</ENC-GTX-TIK-TOT-TTC>
  <ENC-GTX-TIK-PER-TOT-TTC>931.52</ENC-GTX-TIK-PER-TOT-TTC>
  <ENC-GTX-TIK-HOR-GDH>20180515160915</ENC-GTX-TIK-HOR-GDH>
  <ENC-GTX-TIK-TAG-SIG>prX-
PmHPvgT3lpirn72MoFNlrXpy7tFTIS7N9DRw3z3lLjjoylo2Z5dVbtSmDCIbnl3anC4pgJSLdC92bh4rzK444N5WS
vjNqnO213GJ5Q3qplx9uQji2tivkpYBHLOARvBxeheX57-
BdE7eojm_vlybDpidu5tC6MaYFGWWYz1QSdfN0K3urHIF5PJleCvQYIBd_rmk2zOrpX-
3DaCN52eFuNzf1akSQXgbM-lxz2cZjtuWBsmxOiEQPCgoG3OD9HzOAzKtkPOhKyd1QOIF-
va72b7EdZl4TkCwQ2CCshApRS8TSc84SM5iwtgmukZDMJBEdF8W0iWTBOT8qYCdWQ</ENC-GTX-TIK-
TAG-SIG>
  <PreviousSignature>JnOlnTbyr1Tcd8l-7qnZMzB5v1og8RYmtk0w6-
ZocTGsVrTcPnUtX3yVjfn_ph3JccXKVaZb2MkA-iS50F5C2mGeUliecuKWG9W2-
zLPuSf3E8Djtl80WpHEY8QKHvapSRtqDc3WipiQQizt5uHvsAvEequnBRIB7FPC4JjvezxmYD7fcy29sZaOQVZgjH
vF1bie_31178NNPNJTSu1MW4uN-GTAOUT2-CNIRff4a-
S8l0kQSIgOzabKre0XH6xwjt6g7xOefGpCtApSgHocwuyxz350NhV3C9dFoQ8DANfCy4lChreozwNLCBZTzD
ROAC-_kgO_Rtvs9Kq_o5-w</PreviousSignature>

<SignableData>0000:26118|0500:14684|1800:44837|0000:2870,817.74,20180515160915,34,O,JnOlnT
byr1Tcd8l-7qnZMzB5v1og8RYmtk0w6-ZocTGsVrTcPnUtX3yVjfn_ph3JccXKVaZb2MkA-
iS50F5C2mGeUliecuKWG9W2-
zLPuSf3E8Djtl80WpHEY8QKHvapSRtqDc3WipiQQizt5uHvsAvEequnBRIB7FPC4JjvezxmYD7fcy29sZaOQVZgjH
vF1bie_31178NNPNJTSu1MW4uN-GTAOUT2-CNIRff4a-
S8l0kQSIgOzabKre0XH6xwjt6g7xOefGpCtApSgHocwuyxz350NhV3C9dFoQ8DANfCy4lChreozwNLCBZTzD
ROAC-_kgO_Rtvs9Kq_o5-w</SignableData>
</GrandTotal>
<GrandTotal>
  <ENC-GTX-NID>168</ENC-GTX-NID>
  <ENC-GTX-TYP>Ticket</ENC-GTX-TYP>
  <ENC-GTX-ORI-NID>35</ENC-GTX-ORI-NID>
  <ENC-GTX-TIK-MTN-TVA-TTC>0000:26263|0500:15583|1800:44837|0000:2870</ENC-GTX-TIK-
MTN-TVA-TTC>
  <ENC-GTX-TIK-TOT-TTC>828.18</ENC-GTX-TIK-TOT-TTC>
  <ENC-GTX-TIK-PER-TOT-TTC>941.96</ENC-GTX-TIK-PER-TOT-TTC>
  <ENC-GTX-TIK-HOR-GDH>20180515160928</ENC-GTX-TIK-HOR-GDH>
  <ENC-GTX-TIK-TAG-SIG>MP_IYDejVrcwAWDRRpeU_MWjiRmcu9l4lYeG-
_mgvc2zuHZLAzD7xPlbmRjLF9UeoMjirn_2YbLR4957VasxNSQPCI-
4zWqluPOsSsonTrdzVWqhOleEteHE2itcpzQPLAWbpUVb4YjZD9R7tUzbA54lgqrGze06zlPrLObrOBZg9kuYAb
rLdFWWzfkFpDzNpVDXF10gXA2DZBjVqILPghM_Vdh6l1CSV2lz_kWnLFrp0lJirdTN_iMUNCyYX-
d32_c7lOuMtxAvcdDpnu8DcZtNdIxjGdgOW16S7kwDALKFzX4epD8Glxyj0bj-
LKvyLgqXUNe8BczXdbuMVZVOQ</ENC-GTX-TIK-TAG-SIG>
  <PreviousSignature>prX-
PmHPvgT3lpirn72MoFNlrXpy7tFTIS7N9DRw3z3lLjjoylo2Z5dVbtSmDCIbnl3anC4pgJSLdC92bh4rzK444N5WS
vjNqnO213GJ5Q3qplx9uQji2tivkpYBHLOARvBxeheX57-
BdE7eojm_vlybDpidu5tC6MaYFGWWYz1QSdfN0K3urHIF5PJleCvQYIBd_rmk2zOrpX-

```

3DaCN52eFuNzf1akSQXgbM-lxz2cZjtuWBsmxOiEQPCgoG3OD9HzOAzKtkPOhKyd1QOIF-
va72b7EdZl4TkCWq2CCshApRS8TSc84SM5iwtgmuKZDMJBEdF8W0iWTBOT8qYCdWQ</PreviousSignature>

<SignableData>0000:26263|0500:15583|1800:44837|0000:2870,828.18,20180515160928,35,O,prX-
PmHPvgT3Ipirn72MoFNlrXpy7tFTIS7N9DRw3z3ILjjoylo2Z5dVbtSmDCIbnl3anC4pgJSLdC92bh4rzK444N5WS
vjNqnO213GJ5Q3qplx9uQji2tivkpYBHLOARvBxeheX57-
BdE7eojm_vlybDpidu5tC6MaYFGWWYz1QSdfN0K3urHIF5PJleCvQYIBd_rmk2zOrpX-
3DaCN52eFuNzf1akSQXgbM-lxz2cZjtuWBsmxOiEQPCgoG3OD9HzOAzKtkPOhKyd1QOIF-
va72b7EdZl4TkCWq2CCshApRS8TSc84SM5iwtgmuKZDMJBEdF8W0iWTBOT8qYCdWQ</SignableData>

</GrandTotal>

<GrandTotal>

<ENC-GTX-NID>169</ENC-GTX-NID>

<ENC-GTX-TYP>Ticket</ENC-GTX-TYP>

<ENC-GTX-ORI-NID>36</ENC-GTX-ORI-NID>

<ENC-GTX-TIK-MTN-TVA-TTC>0000:26263|0500:15583|1800:45315|0000:2870</ENC-GTX-TIK-

MTN-TVA-TTC>

<ENC-GTX-TIK-TOT-TTC>832.96</ENC-GTX-TIK-TOT-TTC>

<ENC-GTX-TIK-PER-TOT-TTC>946.74</ENC-GTX-TIK-PER-TOT-TTC>

<ENC-GTX-TIK-HOR-GDH>20180515160942</ENC-GTX-TIK-HOR-GDH>

<ENC-GTX-TIK-TAG-SIG>jHQcH_eZvFzohUB1LmfjN-6sNjpvSWU70n9BFZjMz-

73EaoRT1ZkjfTiey1DxTW_z8N7cGCh3gsW0LStqY2MSBofT14Kisiv14j6-yERACoasKhRzJoYbsx-

KYZMug9CdXEqFpyynHAtEdUrU0wZR6noqlXoNlrhpJ6uj8B5-

3xgP_b03j4L0YS3et9wAPPbySOeWm5h9iFNSvfdqaMjmnYkwD7BGFmksJsE8VpLpj3xXqRdONKzflQSAGw4A

Dd4He9V-HArrjvntER3cRiltpeqTUXF3F3JgaiOUiuqEyxWAjQ68-

MIQRa6JA2cgZlV2_vuN_GL8hKySSbP0VWw</ENC-GTX-TIK-TAG-SIG>

<PreviousSignature>MP_IYDejVrcwAWDRRpeU_MWjiRmcu9I4IYeG-

_mgvc2zuHZA7D7xPlbmRjLF9UeoMjirn_2YbLR4957VasxNSQPCI-

4zWqluPOsSsonTrdzVWqhOleEteHE2itcpzQPLAWbpUVb4YjZD9R7tUzbA54lgqrGze06zlPrLObrOBZg9kuYAb

rLdFWWzfkPdzNpVDXF10gXA2DZBjVqILPghM_Vdh6I1CSV2Iz_kWnLFrp0IjrdTN_iMUNCyYX-

d32_c7lOuMtxAvcdDpnu8DcZtNdlxjGdgOW16S7kwDALKFzX4epD8Glxyj0bj-

LKvyLgqXUNe8BczXdbuMVZVOQ</PreviousSignature>

<SignableData>0000:26263|0500:15583|1800:45315|0000:2870,832.96,20180515160942,36,O,MP_IY
DejVrcwAWDRRpeU_MWjiRmcu9I4IYeG-_mgvc2zuHZA7D7xPlbmRjLF9UeoMjirn_2YbLR4957VasxNSQPCI-
4zWqluPOsSsonTrdzVWqhOleEteHE2itcpzQPLAWbpUVb4YjZD9R7tUzbA54lgqrGze06zlPrLObrOBZg9kuYAb
rLdFWWzfkPdzNpVDXF10gXA2DZBjVqILPghM_Vdh6I1CSV2Iz_kWnLFrp0IjrdTN_iMUNCyYX-
d32_c7lOuMtxAvcdDpnu8DcZtNdlxjGdgOW16S7kwDALKFzX4epD8Glxyj0bj-
LKvyLgqXUNe8BczXdbuMVZVOQ</SignableData>

</GrandTotal>

<GrandTotal>

<ENC-GTX-NID>170</ENC-GTX-NID>

<ENC-GTX-TYP>Daily</ENC-GTX-TYP>

<ENC-GTX-ORI-NID>467</ENC-GTX-ORI-NID>

<ENC-GTX-TIK-MTN-TVA-TTC>0000:26263|0500:15583|1800:45315|0000:2870</ENC-GTX-TIK-

MTN-TVA-TTC>

<ENC-GTX-TIK-TOT-TTC>832.96</ENC-GTX-TIK-TOT-TTC>

<ENC-GTX-TIK-PER-TOT-TTC>946.74</ENC-GTX-TIK-PER-TOT-TTC>

<ENC-GTX-TIK-HOR-GDH>20180515161025</ENC-GTX-TIK-HOR-GDH>

<ENC-GTX-TIK-TAG-SIG>d6JVJEXJSKtEk3VWk5XeWto2JdZggJFnW9-IHbVteg8xCo49mS9-

BjI5ihdOHfzbOB6N_qpwbjRjgm0jy1nvJoE0WXP6mjQo7GNyCKnAsxVxwKus5bq-RjBD2-

Uzzh6MvfrRRKkqott4PX17yv2PgNTtw6_A2iCVP_Rgm9ott13Y6PrVIUpps1tZ6slabgt4ZNkCgeRfE0eb9GNOGE

_iwm3OA700dXuWuafsDiuHdVptZd1CSqITkjM3wk4OhQ_BTd2WMm9Czi5wZJ00OxKuoUwyyMiOfSCFLohRjS

mG6XU8A8RhoB4IRXyCfze3r0oqLE1ta-FWYS-dxSutXgjqtg</ENC-GTX-TIK-TAG-SIG>

<PreviousSignature>jHQcH_eZvFzohUB1LmfjN-6sNjpvSWU70n9BFZjMz-

73EaoRT1ZkjfTiey1DxTW_z8N7cGCh3gsW0LStqY2MSBofT14Kisiv14j6-yERACoasKhRzJoYbsx-

KYZMug9CdXEqFpyynHAtEdUrU0wZR6noqlXoNlrhpJ6uj8B5-

3xgP_b03j4L0YS3et9wAPPbySOeWm5h9iFNSvfdqaMJmnYkwD7BGFmksJsE8VpLpj3xXqRdONKzflQSAGw4A
Dd4He9V-HArrrvjvntER3cRiltpeqTUxF3F3JgaiOUiuqEyxWAjQ68-
MiQRa6JA2cgZIV2_vuN_GL8hKySSbP0VWw</PreviousSignature>

<SignableData>0000:26263|0500:15583|1800:45315|0000:2870,832.96,20180515161025,467,O,jHQc
H_eZvFzohUB1LmfjN-6sNjpvSWU70n9BFZjMz-
73EaoRT1ZkfTiey1DxTW_z8N7cGCh3gsW0LStqY2MSBoft14Kisiv14j6-yERACOasKhRzJoYbsx-
KYZMug9CdXEqFpyynHAtEdUrU0wZR6noqlXoNlrhpJ6uj8B5-
3xgP_b03j4L0YS3et9wAPPbySOeWm5h9iFNSvfdqaMJmnYkwD7BGFmksJsE8VpLpj3xXqRdONKzflQSAGw4A
Dd4He9V-HArrrvjvntER3cRiltpeqTUxF3F3JgaiOUiuqEyxWAjQ68-
MiQRa6JA2cgZIV2_vuN_GL8hKySSbP0VWw</SignableData>

</GrandTotal>

</GrandTotalTable>

<JETTable>

<JET>

<JET-NID>844</JET-NID>

<JET-EVT-NUM>999</JET-EVT-NUM>

<JET-EVT-LIB>StartBusinessDay</JET-EVT-LIB>

<JET-OPE-NID>99</JET-OPE-NID>

<JET-GDH>20180515160642</JET-GDH>

<JET-INF>addition info ??</JET-INF>

<JET-TAG-

SIG>ORzYpopG2zbXFYmXhDCI_exHNFbg0kObo1RKfzdDXR_7RXjcdKJtTCnjuDk9N3amX0Q7e9euAojNrC7o
A5-EilBxdk-tcNPe6j4jqW6Ze0a166N-

YXzZMoLqn5bsrvabsOfd99bNs7TQ4tsXXrJfYgDcnzVIBHliFakal5wW_W1PWERozX4YvUkxCyE9ZyfwstCbrKdq
5VchChUciGueMetoEdtqaEbLHiVrdaDOhwScOVUTAwOfIt_O_Lgid9EeHyGGv9VTqF54ChEsJndEyC3byF9Wat8
pJNqdfZ2B1JWDHOrWXqjou6w_O9aZ0-6N2k9OMAuy6QEeFspE2at_Q</JET-TAG-SIG>

<TAG-JET-CAI-NID>POS#2534</TAG-JET-CAI-NID>

<PreviousSignature>BKZpAyx3PVB_DCN_9G1GcwDEBrHkFFJSx621oDHQRteatkT7x89mmVDFdw7QSLnPtC0
2RQeilhKKwcAlPwIRLm95S7x2pFmw884Dyamk3DJagckxnKFIPoEjgX99pKo1m0-CB5Q-
sNn2glCILagLR_B_yqxd8wX4uDji0rLvXmAA6jflM1ZjdV-LFdl7k7noaoZ3gYvC14d5RxOnTN0IPay-
mpMACL0dosBezzkEHM7Drjfy35U-
actzt57L7vRsofwhpzdgcBHmgymVAS36xfDjG7B5on1sgj3TeP5GblJ5KUMxtwHloi1Ffw2PPHQAxrKWoyUpNb
mE6YADxy7sQ</PreviousSignature>

<SignableData>844,999,StartBusinessDay,20180515160642,99,POS#2534,O,BKZpAyx3PVB_DCN_9G1Gc
wDEBrHkFFJSx621oDHQRteatkT7x89mmVDFdw7QSLnPtC02RQeilhKKwcAlPwIRLm95S7x2pFmw884Dyamk
3DJagckxnKFIPoEjgX99pKo1m0-CB5Q-sNn2glCILagLR_B_yqxd8wX4uDji0rLvXmAA6jflM1ZjdV-
LFdl7k7noaoZ3gYvC14d5RxOnTN0IPay-mpMACL0dosBezzkEHM7Drjfy35U-
actzt57L7vRsofwhpzdgcBHmgymVAS36xfDjG7B5on1sgj3TeP5GblJ5KUMxtwHloi1Ffw2PPHQAxrKWoyUpNb
mE6YADxy7sQ</SignableData>

</JET>

<JET>

<JET-NID>845</JET-NID>

<JET-EVT-NUM>40</JET-EVT-NUM>

<JET-EVT-LIB>SignOff</JET-EVT-LIB>

<JET-OPE-NID>99</JET-OPE-NID>

<JET-GDH>20180515160818</JET-GDH>

<JET-INF>addition info ??</JET-INF>

<JET-TAG-SIG>f1NB1HqjUaLYqEsfqLzN-ekFxThvW9PVGd1Xf3YFryCKC8lbztAM-

wjlb41AOU8IS0b3TL3sddK6oR8k3Qk3qBDIP3QZotXL5_SonWnlegu-FmsphnMuqjx1OC8VFfw85MU1Yz9m-
J0yaTKj0MjDTaW3BRR0xWsjXiwtRoBBWPHURuUHUUmxAeb435EIFM3haHBtrPMVsskRzMOXNx6dg0jcSDkbG
D8zhzzew55K70yr6TeKt7o3gjWBXksrRTCKjUc364zAIVSZ7V2R7Dfvs7AMaEBEXkeEIQ_0UQzQ2Sr3lkyjCgLO9
rR2no6vAYGxp1l3du7on2cgqHPyUT5Cg</JET-TAG-SIG>

<TAG-JET-CAI-NID>POS#2534</TAG-JET-CAI-NID>

<PreviousSignature>ORzYpopG2zbXFYmXhDCI_exHNFbg0kObo1RKfzdDXR_7RXjcdKJtTCnjuDk9N3amX0Q7e9euAoJNrC7oA5-EilBxdk-tcNPe6J4jqW6Ze0a166N-YXzZMoLqn5bsrvabsOfd99bNs7TQ4tsXXrJFygDcnzVIBHliFaKa15wW_W1PWERozX4YvUkxCyE9ZyfwtCbrKdq5VchChUciGueMetoEdtqaEbLHiVrdaDOhwScOVUTAwOfI_O_Lgid9EeHyGGv9VTqF54ChEsJndEyC3byF9WaT8pJNqdfZ2B1JWDHOrWXjou6w_O9aZ0-6N2k9OMAuy6QEeFspE2at_Q</PreviousSignature>

<SignableData>845,40,SignOff,20180515160818,99,POS#2534,O,ORzYpopG2zbXFYmXhDCI_exHNFbg0kObo1RKfzdDXR_7RXjcdKJtTCnjuDk9N3amX0Q7e9euAoJNrC7oA5-EilBxdk-tcNPe6J4jqW6Ze0a166N-YXzZMoLqn5bsrvabsOfd99bNs7TQ4tsXXrJFygDcnzVIBHliFaKa15wW_W1PWERozX4YvUkxCyE9ZyfwtCbrKdq5VchChUciGueMetoEdtqaEbLHiVrdaDOhwScOVUTAwOfI_O_Lgid9EeHyGGv9VTqF54ChEsJndEyC3byF9WaT8pJNqdfZ2B1JWDHOrWXjou6w_O9aZ0-6N2k9OMAuy6QEeFspE2at_Q</SignableData>

</JET>

<JET>

<JET-NID>846</JET-NID>

<JET-EVT-NUM>80</JET-EVT-NUM>

<JET-EVT-LIB>PosStartup</JET-EVT-LIB>

<JET-OPE-NID>

</JET-OPE-NID>

<JET-GDH>20180515160842</JET-GDH>

<JET-INF>addition info ??</JET-INF>

<JET-TAG-SIG>jOXUcgT4XzA8hENAAxKOfst9XTgN367BusFc3YUy-

F9s1iyZfAphPx03yqy4xcTHfPEQEwpniX_klhBHMWDLHBh36SGKlq5lqLYKUNNOYqfY54b4AV1H4B1I7oGEDbHDUFH120B3RLFh0kucu_tHMBGikJlg7gOCTGdPH9xYr1ItGEWYRApPYLkCJ3d3Dg3NZChpSqLfe8KSoxs2LyTCE38E8t6Cu-R8GUxLoKDrxMPuY-_FzJyUAMyoEVdr1BpQhNJR4t9HEn7SFKmBxaC5GrJzQ5C-FUTcu9yxWGeOQj5_x5_K4DlxBprcqA1Zb28PX5G-FFBh8OvFVlo6PGa7hw</JET-TAG-SIG>

<TAG-JET-CAI-NID>POS#2534</TAG-JET-CAI-NID>

<PreviousSignature>f1NB1HqjUaLYqEsfqLzN-ekFxTHvW9PVGd1Xf3YFriyCKC8lbztAM-

wjlb41AOU8IS0b3TL3sddK6oR8k3Qk3qBDIP3QZotXL5_SonWnlegu-FmsphnMuqjx1OC8VFfw85MU1Yz9m-J0YaTKj0MjDTaW3BRR0xWsjXiwtRoBBWPHURuUHUUmxAeb435EIFM3haHBtrPMVsskRzMOXNx6dg0jcSDkbGD8zhzzewS5K70yr6TeKt7o3gJWBXksrRTCKjUc364zAIVSZ7V2R7Dfvs7AMaEBEXkeEIQ_0UQzQ2Sr3IkjyCgLO9rR2no6vAYGxp1I3du7on2cgqHPyUT5Cg</PreviousSignature>

<SignableData>846,80,PosStartup,20180515160842,,POS#2534,O,f1NB1HqjUaLYqEsfqLzN-

ekFxTHvW9PVGd1Xf3YFriyCKC8lbztAM-

wjlb41AOU8IS0b3TL3sddK6oR8k3Qk3qBDIP3QZotXL5_SonWnlegu-FmsphnMuqjx1OC8VFfw85MU1Yz9m-J0YaTKj0MjDTaW3BRR0xWsjXiwtRoBBWPHURuUHUUmxAeb435EIFM3haHBtrPMVsskRzMOXNx6dg0jcSDkbGD8zhzzewS5K70yr6TeKt7o3gJWBXksrRTCKjUc364zAIVSZ7V2R7Dfvs7AMaEBEXkeEIQ_0UQzQ2Sr3IkjyCgLO9rR2no6vAYGxp1I3du7on2cgqHPyUT5Cg</SignableData>

</JET>

<JET>

<JET-NID>847</JET-NID>

<JET-EVT-NUM>80</JET-EVT-NUM>

<JET-EVT-LIB>SignOn</JET-EVT-LIB>

<JET-OPE-NID>99</JET-OPE-NID>

<JET-GDH>20180515160845</JET-GDH>

<JET-INF>addition info ??</JET-INF>

<JET-TAG-

SIG>g6avWO_dx fdd9I5Xxx6j9GqNX51ZNtPo8QBMh6CbSV8KKXfrxv62Kkd52CtUbvneIO_iHmeicoPLenQxDagR68C4kik8eYF8HxktYfQLltud7uSvU8p6kpg5IYs0vjzsTonDBij8FWEeRjI6668XW_REvBzehI2-D-U08F2RbxAo2IoSy7S5qO3BEeV-vTpf-IOMcbkqGXHRCnBw7U-OLgTzTQK9s1O_bPnBP-AD05qEFrpLOU0sbD1IrK8J6LsIWbBv88LCGY2sdXeb-

YDxpToR1WQ6OME2Dd809hjcDmEhikjZ99IGtqcDqRPY94DTaDXhpDOWxi-ilg2GocQA</JET-TAG-SIG>

<TAG-JET-CAI-NID>POS#2534</TAG-JET-CAI-NID>

<PreviousSignature>jOXUcgT4XzA8hENAAxKOfst9XTgN367BusFc3YUy-

F9s1iyZfAphPx03yqy4xcTHfPEQEwpniX_klhBHMWDLHBh36SGKlq5lqLYKUNNOYqfY54b4AV1H4B1I7oGEDbHDUFH120B3RLFh0kucu_tHMBGikJlg7gOCTGdPH9xYr1ItGEWYRApPYLkCJ3d3Dg3NZChpSqLfe8KSoxs2LyTCE

38E8t6Cu-R8GUxLoKDrxMPuY-_FzJyUAMyoEVdr1BpQhNJR4t9HEn7SFKmBxaC5GrJzQ5C-
FUTcu9yxWGeOQj5_x5_K4DlxBprcqA1Zb28PX5G-FFBh8OvFVlo6PGa7hw</PreviousSignature>

<SignableData>847,80,SignOn,20180515160845,99,POS#2534,O,jOXUcgT4XzA8hENAAxKOfst9XTgN367
BusFc3YUy-
F9s1iyZfAphPx03yqy4xcTHFpEQEwpniX_klhBHMWDLHb36SGKlq5lqLYKUNNOYqfY54b4AV1H4B1I7oGEDb
HDUHFI20B3RLfHokucu_tHMBGikJlg7gOCTGdPH9xYr1ItGEWYrAppYLKcJ3d3Dg3NZcHpSqLfe8KSoxs2LyTCE
38E8t6Cu-R8GUxLoKDrxMPuY-_FzJyUAMyoEVdr1BpQhNJR4t9HEn7SFKmBxaC5GrJzQ5C-
FUTcu9yxWGeOQj5_x5_K4DlxBprcqA1Zb28PX5G-FFBh8OvFVlo6PGa7hw</SignableData>

</JET>

<JET>

<JET-NID>848</JET-NID>

<JET-EVT-NUM>999</JET-EVT-NUM>

<JET-EVT-LIB>NoSale</JET-EVT-LIB>

<JET-OPE-NID>99</JET-OPE-NID>

<JET-GDH>20180515160946</JET-GDH>

<JET-INF>addition info ??</JET-INF>

<JET-TAG-

SIG>IJ2MjVM9ddwDnsrsEGq6U_DPXFZe21un8P0ZXTx6BOWZ9glF2zxhYo_hGfAhKhJWFko5RUlteB68n6k2-
2TPH32FF3syqmH7YU8Tifhr29vIEXMtZiLaLRJ9NfLnXXOM9a05whhQ2SUS4Y7bUJK4DxKMowid1ul8Gon2xa
Ge01RkGYAmrZT_uh6n2A2SIHgohIZbEmkSG3JSR9ASjgGDwx3-cOr_Zxslj9LV-
R9pePTSOzkt492Alnwdq1MgmPyTsKIRQnQIRYab5eRELT9eAgeGHCk11B5MOq0G5IQKy1HegBgZ8zJqYGRxs
B1m4_EPVVgKzqWatUDmKQ-VA</JET-TAG-SIG>

<TAG-JET-CAI-NID>POS#2534</TAG-JET-CAI-NID>

<PreviousSignature>g6avWO_dxfdd9I5Xxx6j9GqNX51ZNtPo8QBmH6CbSV8KKXfrxfV62Kkd52CtUbnvneIO_i
HmeicoPlenQxDagR68C4kik8eYF8HxktYfQLltud7uSvU8p6kpg5IYs0vjzsTOnDBij8FWEeRjI6668XW_REvBze
hl2-D-U08F2RbxAo2IoSy7S5qO3BEeV-vTpf-IOMcbkqGXHRCnBw7U-0LgTzTQK9s1O_bPnBP-
AD05qEFrPLOU0sbD1lrK8J6LsIWBbv88LCGY2sdXeb-
YDxpToR1WQ6OME2DdB09hjcDmEhikjZ99IGtqcDqRPY94DTaDXhpDOWxl-
ilg2GocQA</PreviousSignature>

<SignableData>848,999,NoSale,20180515160946,99,POS#2534,O,g6avWO_dxfdd9I5Xxx6j9GqNX51ZNtP
o8QBmH6CbSV8KKXfrxfV62Kkd52CtUbnvneIO_iHmeicoPlenQxDagR68C4kik8eYF8HxktYfQLltud7uSvU8p6
kpg5IYs0vjzsTOnDBij8FWEeRjI6668XW_REvBzehl2-D-U08F2RbxAo2IoSy7S5qO3BEeV-vTpf-
IOMcbkqGXHRCnBw7U-0LgTzTQK9s1O_bPnBP-AD05qEFrPLOU0sbD1lrK8J6LsIWBbv88LCGY2sdXeb-
YDxpToR1WQ6OME2DdB09hjcDmEhikjZ99IGtqcDqRPY94DTaDXhpDOWxl-ilg2GocQA</SignableData>

</JET>

<JET>

<JET-NID>849</JET-NID>

<JET-EVT-NUM>170</JET-EVT-NUM>

<JET-EVT-LIB>Loan</JET-EVT-LIB>

<JET-OPE-NID>99</JET-OPE-NID>

<JET-GDH>20180515161019</JET-GDH>

<JET-INF>Sk.nauda:8</JET-INF>

<JET-TAG-SIG>dmLe3Mybp4mYzMjauTK70dE5SNUIm26Wc04TYMmDM6LSTZICOMR8-

TGXdqbtDAwrAMoqwFBSQx0pFxFScm6fQ8ZqdRoMi19gDhELdmem4rZ06ET5wilYB6Yar25JMqmN9-
f5IE7CANixNnDYgjpBHPgwhP9xsl2g7VWXOgrMjfbM8UsGFNZ8OqajTArLoLW1JEs8zAffWez5aNmxBY2i0u6
8iK1oW-DSOeSggB7vkm3I36ZaC8EakJwxR8r_iFoAQeepQCChc-
RJZ3ovyGyku_lg0AdpDWkX0dpWx0GWERj2luLW1az9gFtpcBHS7KHHdtLu74VeVaue1vQe0VQ</JET-TAG-
SIG>

<TAG-JET-CAI-NID>POS#2534</TAG-JET-CAI-NID>

<PreviousSignature>IJ2MjVM9ddwDnsrsEGq6U_DPXFZe21un8P0ZXTx6BOWZ9glF2zxhYo_hGfAhKhJWFko5
RUlteB68n6k2-
2TPH32FF3syqmH7YU8Tifhr29vIEXMtZiLaLRJ9NfLnXXOM9a05whhQ2SUS4Y7bUJK4DxKMowid1ul8Gon2xa

Ge01RkGYAmrZT_uh6n2A2SIHgoHlZbEmkSG3JsSR9ASjgGDwx3-cOr_Zxslj9LV-
R9pePTSOzkt492Alnwqd1MgmPyTsKIRQnQIRYab5eRELT9oAgeGHKc11B5MOq0G5IQKy1HegBgZ8zJqYGRxs
B1m4_EPVVgKzqWatUDmKQ-VA</PreviousSignature>

<SignableData>849,170,Loan,20180515161019,99,POS#2534,O,lJ2MjVM9ddwDnsrsEGq6U_DPXFZe21u
n8P0ZXTx6BOWZ9gIF2zxhYo_hGfAhKhJWFko5RUlteB68n6k2-
2TPh32FF3syqmH7YU8Tifhr29vIEXMtZiLaLRJ9NfLnXX0M9a05whhQ2SUS4Y7bUJK4DxKMowid1ul8Gon2xA
Ge01RkGYAmrZT_uh6n2A2SIHgoHlZbEmkSG3JsSR9ASjgGDwx3-cOr_Zxslj9LV-
R9pePTSOzkt492Alnwqd1MgmPyTsKIRQnQIRYab5eRELT9oAgeGHKc11B5MOq0G5IQKy1HegBgZ8zJqYGRxs
B1m4_EPVVgKzqWatUDmKQ-VA</SignableData>

</JET>

<JET>

<JET-NID>850</JET-NID>

<JET-EVT-NUM>50</JET-EVT-NUM>

<JET-EVT-LIB>ZReport</JET-EVT-LIB>

<JET-OPE-NID>99</JET-OPE-NID>

<JET-GDH>20180515161025</JET-GDH>

<JET-INF>addition info ??</JET-INF>

<JET-TAG-

SIG>NPx9yswuujvu6fMun8PP7pRZ2D09ySjgJ7BbMXfpQaMb8UbHT9eNFM7Ttg0tYyn6F0jbdHDqB7bcnG9o
3StnLzNo4Dme3B7XFP8A1Zm0rh9UnUNGZyoTT-97S0kFrJeFjV8WfzU-
gkqU0aI3JajPhTXgJpkCsMC9EIQVXoAFkTBkNek6Isih_nORT6hKe3unmFjvQ7EA2nRHH3I-Qy7-
IEUviUuz7NumEnLXh822WSMGUS7-MZrug9dXRjP29NmD14T25WdoIAx8-
Q_yPZbGnrH7hZASUyVg6dk6X7wFGm9Tz5Y1LDIWCxYkQiuONUED1kNxsD132gwDa6qW7_pWw</JET-
TAG-SIG>

<TAG-JET-CAI-NID>POS#2534</TAG-JET-CAI-NID>

<PreviousSignature>dmLe3My pb4mYzMjauTK70dE5SNUIm26Wc04TYMmDM6LSTZICOmR8-

TGXdqbtDAwrAMOqWFB5Qx0pFxFScm6fQ8ZqdRoMi19gDhELdmem4rZ06ET5wilYB6Yar25JMqmN9-
f5IE7CANIXNnDYgjpBHPgwhP9xsl2g7VWXOgrMjfbM8UsGFNZ8OqajTArLoLW1JEs8zAffWez5aNmxBY2i0u6
8iK1oW-DSOeSggB7vkm3I36ZaC8EakJwxR8r_iFoAQeepQCcHc-
RJZ3ovyGy kul_g0AdpDWkX0dpWx0GWERj2luLW1az9gFtpcBHS7KHHdtLu74VeVaue1vQe0VQ</PreviousSi
gnature>

<SignableData>850,50,ZReport,20180515161025,99,POS#2534,O,dmLe3My pb4mYzMjauTK70dE5SNUIm
26Wc04TYMmDM6LSTZICOmR8-
TGXdqbtDAwrAMOqWFB5Qx0pFxFScm6fQ8ZqdRoMi19gDhELdmem4rZ06ET5wilYB6Yar25JMqmN9-
f5IE7CANIXNnDYgjpBHPgwhP9xsl2g7VWXOgrMjfbM8UsGFNZ8OqajTArLoLW1JEs8zAffWez5aNmxBY2i0u6
8iK1oW-DSOeSggB7vkm3I36ZaC8EakJwxR8r_iFoAQeepQCcHc-
RJZ3ovyGy kul_g0AdpDWkX0dpWx0GWERj2luLW1az9gFtpcBHS7KHHdtLu74VeVaue1vQe0VQ</SignableDa
ta>

</JET>

<JET>

<JET-NID>851</JET-NID>

<JET-EVT-NUM>999</JET-EVT-NUM>

<JET-EVT-LIB>CloseBusinessDay</JET-EVT-LIB>

<JET-OPE-NID>99</JET-OPE-NID>

<JET-GDH>20180515161027</JET-GDH>

<JET-INF>addition info ??</JET-INF>

<JET-TAG-SIG>gPJH7UFI2VpxiedJpkeEsCfdJlrdDXCQ5onQVv-

9fWplzKZ32qpF0RyOjipp7ORn_a1v8ml6eaQxsJ1v56MVeuzlzDnD2i-

I9mSdu4HCFXwB53Bsmhjpa1w3jBMucS4Yrge7sL1MrhJle-

OWm_6cAaaaljsPGN9dSsHOHWksSsSjJTMpc1DY23rZBd3Z_yX4qkD971_OdHurUjSvPIYZua-

NfnXtSbGzqSHKfI04GQujgdiW49Yj9OMSGGvCBTIRIPLZ3QkQ0Gu3CgpFxnj-e3D5VZt5r9-

i4q3fCmR8ql6x9nXVScHKqbQaFVOTZCTs5oWNwwJAXqpij4X6Gig</JET-TAG-SIG>

<TAG-JET-CAI-NID>POS#2534</TAG-JET-CAI-NID>

<PreviousSignature>NPx9yswuuqJvu6fMun8PP7pRZ2D09ySjgl7BbMXfpQaMb8UbHT9eNFM7Ttg0tYyn6F0jb
dHDqB7bcnG9o3StnLzNo4Dme3B7XFP8A1Zm0rh9UnUNGZyoTT-97S0kFrJeFjV8WfzU-
gkqU0a13JajPhTXgJpkCsMC9EIQVXoAFkTBkNek6Isih_nORT6hKe3unmFjvQ7EA2nRHH3I-Qy7-
IEUviUuz7NumEnLXh822WSMGUS7-MZrug9dXRjP29NmD14T25WdolaX8-
Q_yPZbGnrH7hZASUyVg6dk6X7wFGm9Tz5Y1LDIWCxYkQiuONUED1kNxsD132gwDa6qW7_pWw</Previous
Signature>

<SignableData>851,999,CloseBusinessDay,20180515161027,99,POS#2534,O,NPx9yswuuqJvu6fMun8PP7
pRZ2D09ySjgl7BbMXfpQaMb8UbHT9eNFM7Ttg0tYyn6F0jbHDqB7bcnG9o3StnLzNo4Dme3B7XFP8A1Zm0r
h9UnUNGZyoTT-97S0kFrJeFjV8WfzU-
gkqU0a13JajPhTXgJpkCsMC9EIQVXoAFkTBkNek6Isih_nORT6hKe3unmFjvQ7EA2nRHH3I-Qy7-
IEUviUuz7NumEnLXh822WSMGUS7-MZrug9dXRjP29NmD14T25WdolaX8-
Q_yPZbGnrH7hZASUyVg6dk6X7wFGm9Tz5Y1LDIWCxYkQiuONUED1kNxsD132gwDa6qW7_pWw</Signable
Data>

</JET>

<JET>

<JET-NID>852</JET-NID>

<JET-EVT-NUM>20</JET-EVT-NUM>

<JET-EVT-LIB>Daily fiscal archive</JET-EVT-LIB>

<JET-OPE-NID>99</JET-OPE-NID>

<JET-GDH>20180515161027</JET-GDH>

<JET-INF>Validated OK</JET-INF>

<JET-TAG-SIG>aaQx8POAxaAPCOof7OHwYj3O3tP8Z3hY-Zd4m4MWC8TEsew-

cq6gYFGSUSN3Q20IMPkN_zxLibHhJONGSOiWb8ZlXjMzbsyclWtl-XSW9eK2PGRcr6PNsvj-C02U9brr2EhnF-
s0_g9PWC8A734JvbdIQttN2im0P4O7EgLIJIAL7q1fibpn-
fSjq8zpoop93LC7I3MwUSj_Rdpbdw9P_rhkUos2vit8aD2HLQianWNm3bvlG6i9biLGxn-O7EE-HFjpm-
miXVbc4p6WG56adNb9NmexW29VggQ6s2CT0bRCSeZ-
wjfjbpCAntavh9_4YkwpGyqabtaXNOCsLfMA</JET-TAG-SIG>

<TAG-JET-CAI-NID>POS#2534</TAG-JET-CAI-NID>

<PreviousSignature>gPJH7UFI2VpxiedJpkeEsCfdJlrdDXCQ5onQVv-

9fWplzKZ32qpF0Ry0Jipp7ORn_a1v8ml6eaQxsJ1v56MVeuzIzDnD2i-
I9mSdu4HCFXwB53Bsmhjpa1w3jBMucS4Yrge7sL1MrhJle-
OWm_6cAsaaIjzsPGN9dSsHOHWksSsSjJTMpc1DY23rZBd3Z__yX4qkD971_OdHurUjSvPIYZua-
NfnXtsbGzqSHKfI04GQuJgdiW49Yj9OMSGGvCBTIRIPLZ3QkQ0Gu3CgpFxnj-e3D5VZt5r9-
i4q3fCmR8ql6x9nXVScHKqbQaFVOTZCTs5oWNwwJAXqpij4X6Gig</PreviousSignature>

<SignableData>852,20,Daily

fiscal

archive,20180515161027,99,POS#2534,O,gPJH7UFI2VpxiedJpkeEsCfdJlrdDXCQ5onQVv-
9fWplzKZ32qpF0Ry0Jipp7ORn_a1v8ml6eaQxsJ1v56MVeuzIzDnD2i-
I9mSdu4HCFXwB53Bsmhjpa1w3jBMucS4Yrge7sL1MrhJle-
OWm_6cAsaaIjzsPGN9dSsHOHWksSsSjJTMpc1DY23rZBd3Z__yX4qkD971_OdHurUjSvPIYZua-
NfnXtsbGzqSHKfI04GQuJgdiW49Yj9OMSGGvCBTIRIPLZ3QkQ0Gu3CgpFxnj-e3D5VZt5r9-
i4q3fCmR8ql6x9nXVScHKqbQaFVOTZCTs5oWNwwJAXqpij4X6Gig</SignableData>

</JET>

</JETTable>

<PublicKey>

-----BEGIN CERTIFICATE-----

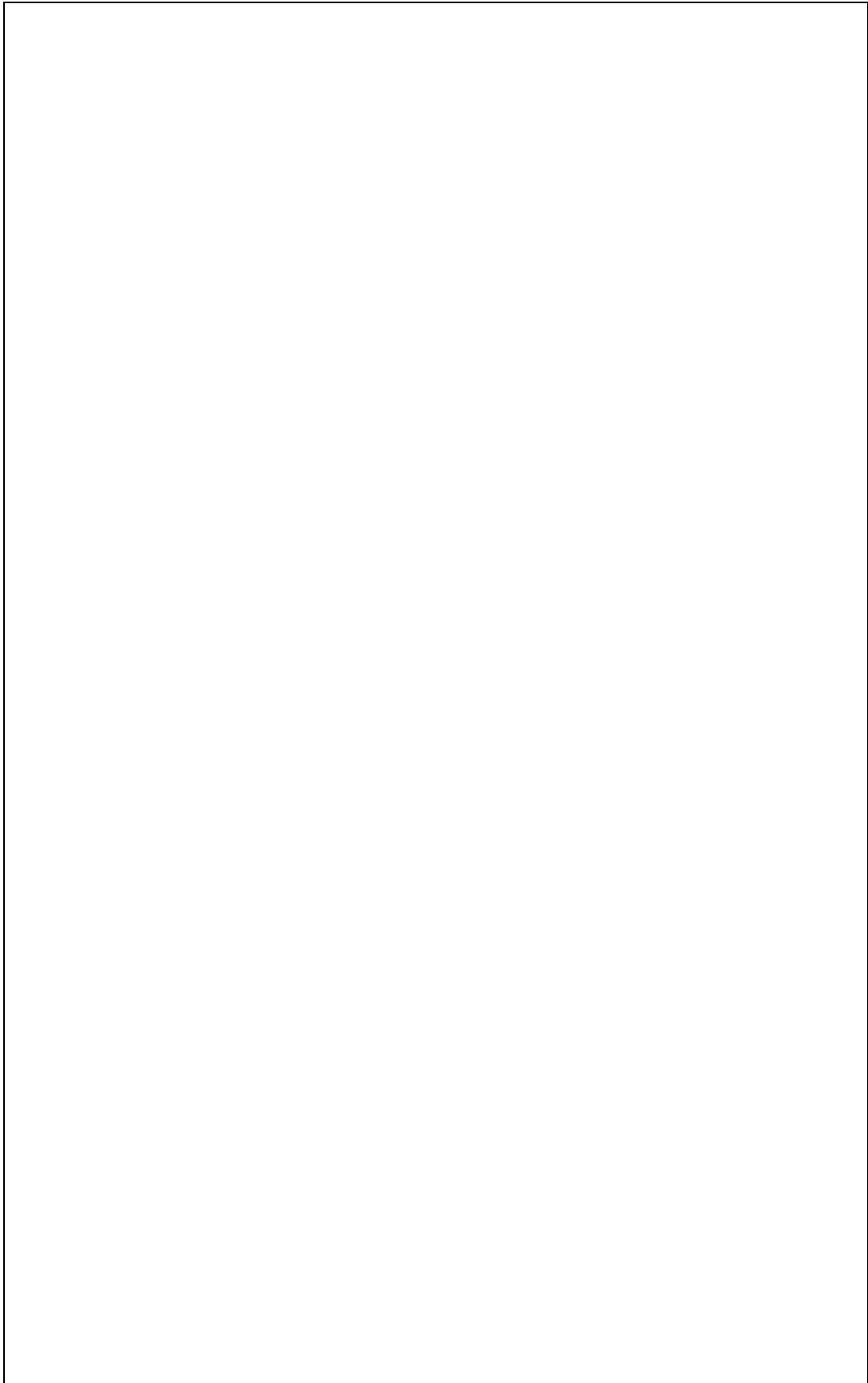
MIIC9TCCAd2gAwIBAgIQNfrzhyVDz4IA5TJJR4YzmTANBgkqhkiG9w0BAQ0FADAdMRswGQYDVQQD
DBJQaWV1dnJlIFtQT1MjMjUzNF0wHhcNMTgwNTA3MDAwMDAwWhcNMTgwNTA3MDAwMDAwWjAdMRsw
GQYDVQQDDBJQaWV1dnJlIFtQT1MjMjUzNF0wggEiMA0GCSqGSIb3DQEBAQUAA4IBDwAwggEKAoIB
AQcnkp+1IPqYmmpya6LbpWu+YpDsM+zjL/+JYj6ZbVpWQ7nuyVbAyLrtq/t8bQ7HoYoZoug2o+
SNE+usbbqV34abF58f13zrXBH8gwe6tgyiG63uWglGQG29FVWPCXfPoFsPZgFtjipYb/DmWwRt/f
CgAHkfHwghDYOlum7wzyH+/zjGsLTFIC3+ar4ACDroKJk9sU3Qr7PEO7fCgLvCvpWRJjVXxNuzzK
2AFR40k4cYS13VRIWS6wnhGTbP9cSFLjPeNiNM0HDG6+DY8TtZUlwDD4yLac7EE1Fa/Z+jnxODc
XGJFCBuWyvgliGsoXgc2JL2T6mg+8I9cWgwxS5ZAgMBAAGjMTAvMB0GA1UdDgQWBRRUpifRr4dz
R8OypIf6lfhllifvzAOBgNVHQ8BAf8EBAMCB4AwDQYJKoZIhvcNAQENBQADggEBAB6/Ts//yxQM

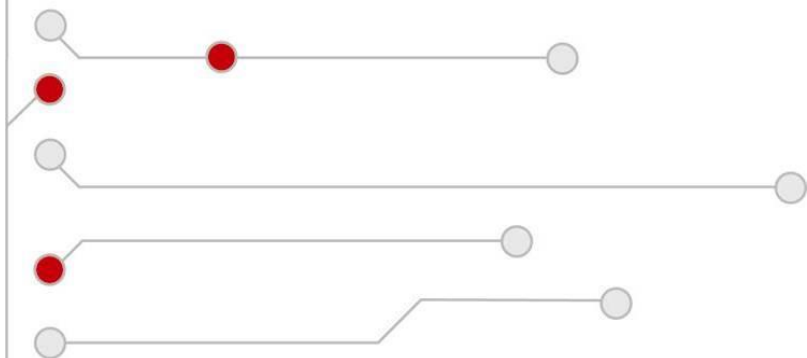
```

p0U0yrFsWM8OfyBC0utHJeMhhWreXnPPHbddDoA+4aSKQ+39XgqiB8EK1HQ3z47xZyRjeL0xi+k1
ojg7xJVOi3vxFS6HJot+7RDo2qR3FUVIbJQ91BqwcZCYmcu4VrI92K9Ps/tDqDLisIDstdp08Z
mCQK0iLISbSfPX1EC12oIXB0rY+6UHLk6ewHycdkK9bBy+3muFg/+sxdLxkPcZ91x5B6AZqxS+Z
ZfU40Weu+EQEiyW7HU/jyYk1lZhQtC8UHK6X5Yp2sJngL0KwwPW8F/JHCFE3DrtxPFq8Hy3BESZ2
ees3lz6u3Fulschf7nUXp3LSzUI=
-----END CERTIFICATE-----
</PublicKey>
<Signature xmlns="http://www.w3.org/2000/09/xmldsig#">
  <SignedInfo>
    <CanonicalizationMethod Algorithm="http://www.w3.org/TR/2001/REC-xml-c14n-20010315" />
    <SignatureMethod Algorithm="http://www.w3.org/2000/09/xmldsig#rsa-sha1" />
    <Reference URI="">
      <Transforms>
        <Transform Algorithm="http://www.w3.org/2000/09/xmldsig#enveloped-signature" />
      </Transforms>
      <DigestMethod Algorithm="http://www.w3.org/2000/09/xmldsig#sha1" />
      <DigestValue>eMeHJ65J7cGFvCIGcTUhKXhzhHw=</DigestValue>
    </Reference>
  </SignedInfo>

  <SignatureValue>DTKa/3My6IGfIFcsyM9nJJYxmqZh46mXcMPhnZUeHUWiKgtauTI/Xy5mhEW3qEwJmIKIaZ5
WJWW1emg4VwAj5a6upHII6Qq4SYL8cAL4SqIFElwMubG4CsfZNpzi6rsRfN1Gk2hWmMVffp7shKH7hc/hAi4YS
n6JY7hAgyxlcMkqVaZzjdCgbFRQsowKT7DSv9sHHXex1AuwB5zFAnwoJFuZJP09nd1f4toUMo5j2cZMSEIkBAs8
1TPi4lnMBKux9i3+s3ZYw+sUh5melm/gby8h3M3nYp/1aWdO0YZXXb1Aulh4Yrj5vBFW9EWGmZurbB7xLaDS
cM+3etyWJ5rigg==</SignatureValue>
</Signature>
</Archive>

```

NOTES



Computer Hardware Design Ltd.

15 Ulbrokas street
Riga, LV1021
Phone: +371 67802812
Fax: +371 67802822
chd@chd.lv
www.chd.lv